

# BOUNDARY & FIXED IMPROVEMENTS SURVEY

## IN SECTION 12, TOWNSHIP 10 SOUTH, RANGE 18 EAST, ALACHUA COUNTY, FLORIDA

# LOCATION MAP



### DESCRIPTION:

(PER OFFICIAL RECORDS BOOK 3195, PAGE 1068):

NORTH ONE-HALF OF NORTHWEST QUARTER OF SOUTHWEST QUARTER (N 1/2 OF NW 1/4 OF SW 1/4) OF SECTION 12, TOWNSHIP-10 SOUTH, RANGE-18 EAST, ALACHUA COUNTY, FLORIDA.

EXCEPTING THEREFROM THAT CERTAIN PORTION LYING ON THE WEST SIDE OF SUCH PROPERTY AND CONTIGUOUS TO PARKER ROAD WHICH WAS PREVIOUSLY CONDEMNED AND TAKEN BY THE CITY OF GAINESVILLE AS AND FOR A POWER LINE AND ANY EASEMENTS OF RECORD.

NOTE: THE UNDERLINED CALL ABOVE IS IN ERROR. THE CORRECT CALL SHOULD BE: RANGE-18-EAST.

(PER OFFICIAL RECORDS BOOK 3122, PAGE 1302):

A PARCEL OF LAND LYING IN THE SOUTH ONE-QUARTER (S 1/4) OF THE NORTHWEST QUARTER (NW 1/4) OF SECTION 12, TOWNSHIP 10 SOUTH, RANGE 18 EAST, ALACHUA COUNTY, FLORIDA BEING MORE PARTICULARLY DESCRIBED AS FOLLOWS:

FOR A POINT OF REFERENCE, COMMENCE AT A FOUND RAILROAD SPIKE AT THE NORTHWEST CORNER OF SAID SECTION 12; THENCE RUN SOUTH 00 DEG. 24 MIN. 16 SEC. WEST ALONG THE WEST LINE OF SAID SECTION 12, A DISTANCE OF 1991.01 FEET TO THE NORTH LINE OF THE SOUTH QUARTER (1/4) OF SAID SECTION 12; THENCE RUN SOUTH 89 DEG. 19 MIN. 17 SEC. EAST ALONG SAID NORTH LINE, A DISTANCE OF 150.00 FEET TO THE EAST LINE OF A 110.0 FOOT WIDE PUBLIC UTILITIES RIGHT-OF-WAY; THENCE RUN SOUTH 00 DEG. 24 MIN. 16 SEC. WEST ALONG SAID EAST RIGHT-OF-WAY LINE, A DISTANCE OF 221.21 FEET TO THE POINT OF BEGINNING; THENCE RUN SOUTH 89 DEG. 18 MIN. 07 SEC. EAST, A DISTANCE OF 265.77 FEET; THENCE RUN NORTH 00 DEG. 36 MIN. 01 SEC. EAST, A DISTANCE OF 59.93 FEET; THENCE RUN SOUTH 89 DEG. 18 MIN. 07 SEC. EAST, A DISTANCE OF 200.10 FEET; THENCE RUN SOUTH 00 DEG. 36 MIN. 01 SEC. WEST, A DISTANCE OF 502.43 FEET TO THE SOUTH LINE OF THE NORTHWEST QUARTER (1/4) OF SAID SECTION 12; THENCE RUN NORTH 89 DEG. 18 MIN. 07 SEC. WEST ALONG SAID SOUTH LINE, A DISTANCE OF 464.36 FEET TO THE AFOREMENTIONED EAST RIGHT-OF-WAY LINE; THENCE RUN NORTH 00 DEG. 24 MIN. 16 SEC. EAST ALONG SAID EAST RIGHT-OF-WAY LINE, A DISTANCE OF 442.51 FEET TO THE POINT OF BEGINNING, CONTAINING 5.0001 ACRES, MORE OR LESS.

LESS AND EXCEPT:

(PER OFFICIAL RECORDS BOOK 3791, PAGE 226):

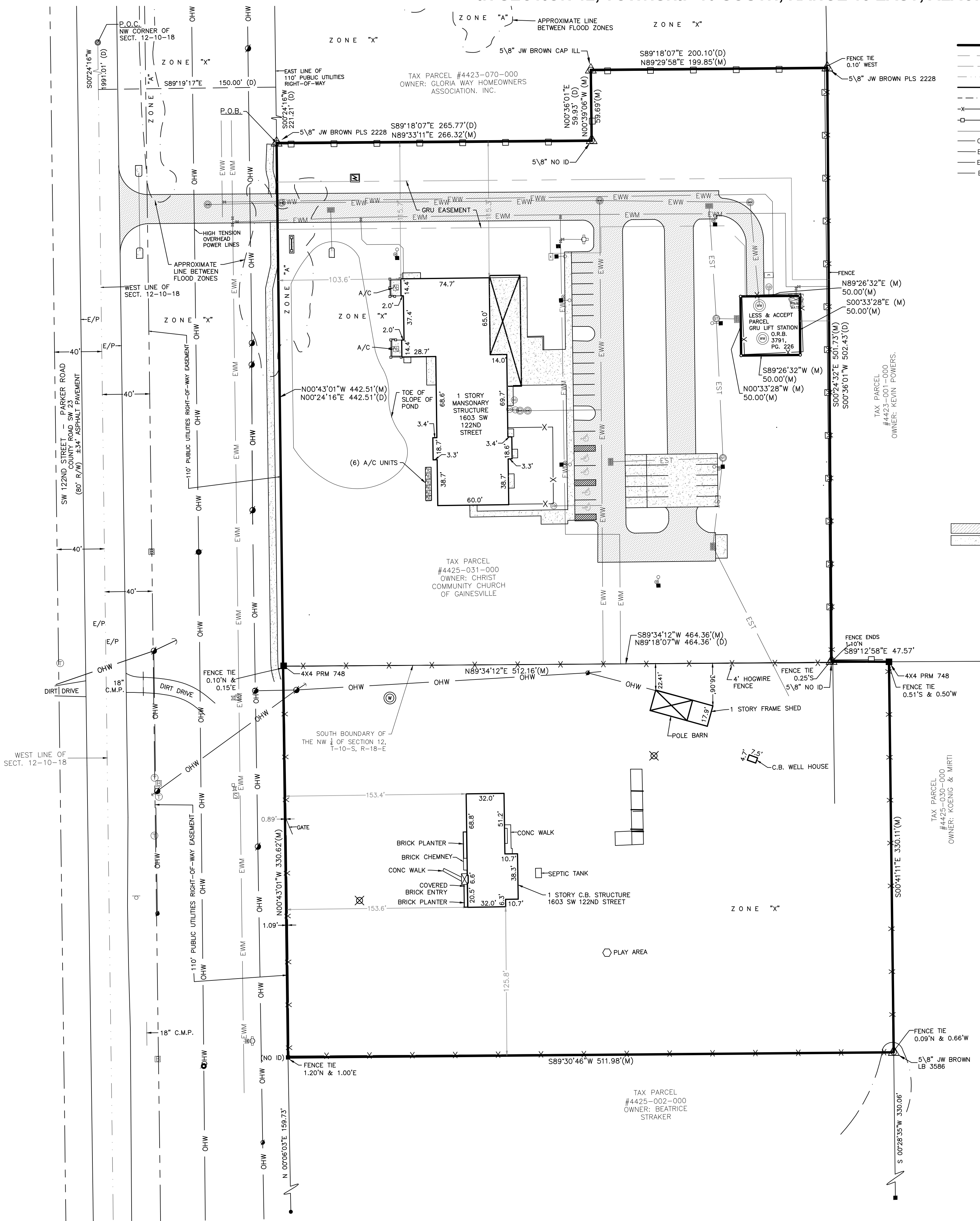
A LIFT STATION PARCEL LYING IN THE SOUTH ONE-QUARTER (S 1/4) OF THE NORTHWEST QUARTER (NW 1/4) OF SECTION 12, TOWNSHIP 10 SOUTH, RANGE 18 EAST, ALACHUA COUNTY, FLORIDA BEING MORE PARTICULARLY DESCRIBED AS FOLLOWS:

FOR A POINT OF REFERENCE, COMMENCE AT A FOUND RAILROAD SPIKE AT THE NORTHWEST CORNER OF SAID SECTION 12; THENCE RUN SOUTH 00°24'16" WEST ALONG THE WEST LINE OF SAID SECTION 12, A DISTANCE OF 1991.01 FEET TO THE NORTH LINE OF THE SOUTH QUARTER (1/4) OF THE NORTHWEST QUARTER (1/4) OF SAID SECTION 12; THENCE RUN SOUTH 89°19'17" EAST ALONG SAID NORTH LINE, A DISTANCE OF 150.00 FEET TO THE EAST LINE OF A 110.0 FOOT WIDE PUBLIC UTILITIES RIGHT-OF-WAY; THENCE RUN SOUTH 00°24'06" WEST ALONG SAID EAST RIGHT-OF-WAY LINE, A DISTANCE OF 254.03 FEET; THENCE RUN SOUTH 89°17'20" EAST, 434.76 FEET; THENCE SOUTH 00°36'01" WEST, 86.01 FEET; THENCE SOUTH 89°17'48" EAST, 31.00 FEET; THENCE SOUTH 00°36'01" WEST, 35.00 FEET; THENCE NORTH 89°17'48" WEST, 25.00 FEET; THENCE SOUTH 00°36'01" WEST, 28.67 FEET; THENCE NORTH 89°23'59" WEST, 50.00 FEET; THENCE NORTH 00°36'01" EAST, 50.00 FEET; THENCE SOUTH 89°23'59" EAST, 50.00 FEET; THENCE SOUTH 00°36'01" WEST, 21.33 FEET TO THE POINT OF BEGINNING.

SUBJECT TO:

A GAINESVILLE REGIONAL UTILITIES EASEMENT LYING IN THE SOUTH ONE-QUARTER (S 1/4) OF THE NORTHWEST QUARTER (NW 1/4) OF SECTION 12, TOWNSHIP 10 SOUTH, RANGE 18 EAST, ALACHUA COUNTY, FLORIDA BEING MORE PARTICULARLY DESCRIBED AS FOLLOWS:

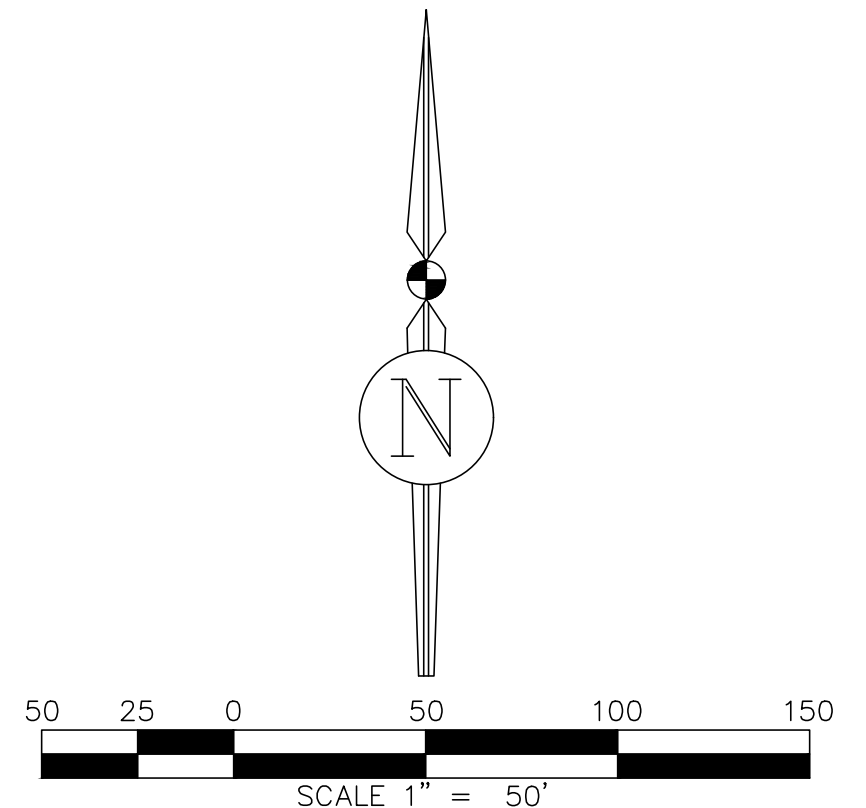
FOR A POINT OF REFERENCE, COMMENCE AT A FOUND RAILROAD SPIKE AT THE NORTHWEST CORNER OF SAID SECTION 12; THENCE RUN SOUTH 00°24'16" WEST ALONG THE WEST LINE OF SAID SECTION 12, A DISTANCE OF 1991.01 FEET TO THE NORTH LINE OF THE SOUTH QUARTER (1/4) OF THE NORTHWEST QUARTER (1/4) OF SAID SECTION 12; THENCE RUN SOUTH 89°19'17" EAST ALONG SAID NORTH LINE, A DISTANCE OF 150.00 FEET TO THE EAST LINE OF A 110.0 FOOT WIDE PUBLIC UTILITIES RIGHT-OF-WAY; THENCE RUN SOUTH 00°24'06" WEST ALONG SAID EAST RIGHT-OF-WAY LINE, A DISTANCE OF 254.03 FEET TO THE POINT OF BEGINNING; THENCE RUN SOUTH 89°17'20" EAST, 434.76 FEET; THENCE SOUTH 00°36'01" WEST, 86.01 FEET; THENCE SOUTH 89°17'48" EAST, 31.00 FEET; THENCE SOUTH 00°36'01" WEST, 35.00 FEET; THENCE NORTH 89°17'48" WEST, 25.00 FEET; THENCE NORTH 00°36'01" EAST, 21.33 FEET; THENCE NORTH 89°23'59" WEST, 46.00 FEET; THENCE NORTH 00°36'01" EAST, 42.77 FEET; THENCE NORTH 44°20'39" WEST, 24.06 FEET; THENCE NORTH 89°17'20" WEST, 104.49 FEET; THENCE SOUTH 00°24'08" WEST, 21.90 FEET; THENCE NORTH 89°35'54" WEST, 42.91 FEET; THENCE NORTH 00°24'06" EAST, 22.13 FEET; THENCE NORTH 89°17'20" WEST, 230.22 FEET TO THE AFOREMENTIONED EAST RIGHT-OF-WAY LINE; THENCE RUN NORTH 00°24'06" EAST ALONG SAID EAST RIGHT-OF-WAY LINE, 40.00 FEET TO THE POINT OF BEGINNING.



- ### LEGEND:
- = BOUNDARY LINE
  - - - = TAX PARCEL LINE
  - - - = RIGHT-OF-WAY LINE
  - - - = SECTION LINE
  - - - = BUILDING OUTLINE
  - - - = FLOOD ZONE LINE
  - - - = HOGWIRE FENCE LINE
  - - - = WOOD FENCE LINE
  - - - = TOE OF SLOPE
  - = OVERHEAD WIRE
  - = WATER MAIN
  - = WASTEWATER LINE
  - ▲— = STORM LINE
- (UNLESS OTHERWISE NOTED)
- ⊙ = FOUND 5/8" REBAR & CAP P.L.S. #2228
  - = FOUND CONC MONUMENT (4"x4") P.L.S. #748
  - ⊙ = METAL POWER POLE
  - ⊙ = WOOD POWER POLE
  - ⊙ = TELEPHONE RISER
  - ⊙ = BELLSOUTH MARKER
  - ⊙ = FOUND NAIL NO IDENTIFICATION
  - ⊙ = AIR CONDITIONER
  - ⊙ = LIGHT POLE
  - ⊙ = CLEAN OUT
  - ♿ = HANDICAP PARKING
  - ⊙ = WATER METER
  - ⊙ = STORM SEWER MANHOLE
  - ⊙ = SANITARY SEWER MANHOLE
  - ⊙ = WATER WELL
  - ⊙ = STORM INLET
  - ⊙ = HANDHOLE
  - ⊙ = FIRE HYDRANT
  - ⊙ = TRANSFORMER
  - ⊙ = UTILITY BOX
  - ▨ = ASPHALT SURFACE
  - ▨ = CONCRETE SURFACE
- ### ABBREVIATIONS:
- A/C = AIR CONDITIONER
  - ACFLUM = ALACHUA COUNTY FUTURE LAND USE MAP 2020
  - B.C. = BACK OF CURB
  - ⊙ = BASELINE
  - C.A.T.V. = CABLE ANTENNAED TELEVISION
  - C.B.(S.) = CONCRETE BLOCK (& STUCCO)
  - ⊙ = CENTERLINE
  - C.O. = CLEANOUT
  - C.L.F. = CHAIN LINK FENCE
  - C.M.P. = CORRUGATED METAL PIPE
  - CONC = CONCRETE
  - ELEV. = ELEVATION
  - E/P = EDGE OF PAVEMENT
  - F.D.O.T. = FLORIDA DEPARTMENT OF TRANSPORTATION
  - F.F. = FINISH FLOOR
  - F.L.U. = FUTURE LAND USE
  - ID = IDENTIFICATION
  - P.L.S. = PROFESSIONAL LAND SURVEYOR
  - P.R.M. = PERMANENT REFERENCE MONUMENT
  - P.O.B. = POINT OF BEGINNING
  - P.O.C. = POINT OF COMMENCEMENT
  - P.O.R. = POINT OF REFERENCE
  - P.O.T. = POINT OF TERMINUS
  - ⊙ = FURNISHED LEGAL DESCRIPTION DATA
  - ⊙ = PUBLIC UTILITIES EASEMENT
  - R.C.P. = REINFORCED CONCRETE PIPE
  - R.W. = RIGHT-OF-WAY
  - SECT. = SECTION
  - S.S. = SANITARY SEWER
  - SO FT = SQUARE FEET
  - TYP. = TYPICAL
  - UE = UNDERGROUND UTILITIES

### SURVEYOR'S NOTES

1. ALL DISTANCES AS SHOWN HEREON ARE EXPRESSED IN U.S. SURVEY FEET AND DECIMAL PARTS THEREOF.
2. BEARINGS ARE BASED ON THE EAST LINE OF THE SUBJECT PARCEL, HAVING A MEASURED BEARING OF N00°43'01"W UTILIZING STATE PLANE NAD83 FLORIDA NORTH ZONE PROJECTION.
3. THIS SURVEY IS BASED ON MEASUREMENTS CONDUCTED ON MARCH 17, 2023.
4. THIS PROPERTY IS IN ZONE "X", WHICH IS AN AREA OF MINIMAL FLOOD RISK OUTSIDE THE 0.2% ANNUAL CHANCE FLOODPLAIN, AND ZONE "A", WHICH IS AN AREA INSIDE THE 1.0% ANNUAL CHANCE FLOODPLAIN, ACCORDING TO FEDERAL EMERGENCY MANAGEMENT AGENCY FLOOD INSURANCE RATE MAP PANEL 120001C0290E (DATED 9/24/2021).
5. THE SIGNING LAND SURVEYOR HAS NOT BEEN PROVIDED A CURRENT TITLE COMMITMENT OF MATTERS AFFECTING TITLE TO THE SUBJECT PROPERTY. THERE MAY EXIST DEEDS OF RECORD, UNRECORDED DEEDS, EASEMENTS OR OTHER MATTERS, THAT COULD AFFECT THE BOUNDARIES OR TITLE TO THE SUBJECT REAL ESTATE.
6. NO UNDERGROUND UTILITIES WERE LOCATED IN THE COURSE OF THIS SURVEY. UNDERGROUND UTILITY LINE LOCATIONS ARE APPROXIMATE.
7. ADDITIONAL ENCUMBRANCES MAY AFFECT THE SUBJECT PARCEL THAT DO NOT APPEAR ON THIS MAP.
8. EASEMENTS DEPICTED ON THIS SURVEY WERE PROVIDED BY THE CLIENT OR ARE RECORDED IN AN ASSOCIATED PLAT. NO EASEMENT RESEARCH WAS CONDUCTED DURING THE COURSE OF THIS SURVEY.
9. REPRODUCED COPIES THAT ARE NOT AT 24"x36" MAY NOT BE TO SCALE.
10. UNLESS OTHERWISE NOTED, CORNER MARKERS SHOWN HEREON WERE FOUND DURING THE COURSE OF THIS SURVEY.



**CHRIST COMMUNITY CHURCH**  
1603 SW 122ND STREET  
GAINESVILLE, FLORIDA

**CIVIL ENGINEERING | LAND PLANNING**  
SURVEYING | CONSTRUCTION SERVICES

3530 NW 43rd Street | Gainesville, FL 34420  
1826 Oxbottom Lane | Tallahassee, FL  
Toll Free: (844) Go-JBPro

THE MAP OF THE PROPERTY DESCRIBED HEREON WAS MADE UNDER MY SUPERVISION AND THIS MAP OF SURVEY FURTHER MEETS THE STANDARDS OF PRACTICE SET FORTH BY THE STATE OF FLORIDA BOARD OF PROFESSIONAL SURVEYORS & MAPPERS IN CHAPTER 5J-17.05, FLORIDA ADMINISTRATIVE CODE, PURSUANT TO SECTION 472.027, FLORIDA STATUTES, AND THE MAP OF SURVEY SHOWN HEREON IS A TRUE AND ACCURATE REPRESENTATION THEREOF TO THE BEST OF MY KNOWLEDGE, BEING SUBJECT TO NOTES AND NOTATIONS SHOWN HEREON.

Florida License No. LS4816  
Certificate of Authorization No. LB8031

NOT VALID WITHOUT THE SIGNATURE AND ORIGINAL RAISED SEAL OF A FLORIDA LICENSED SURVEYOR & MAPPER OR VALID DIGITAL SIGNATURE IN ELECTRONIC FORM

**Richard L. White, PLS**  
Professional Land Surveyor

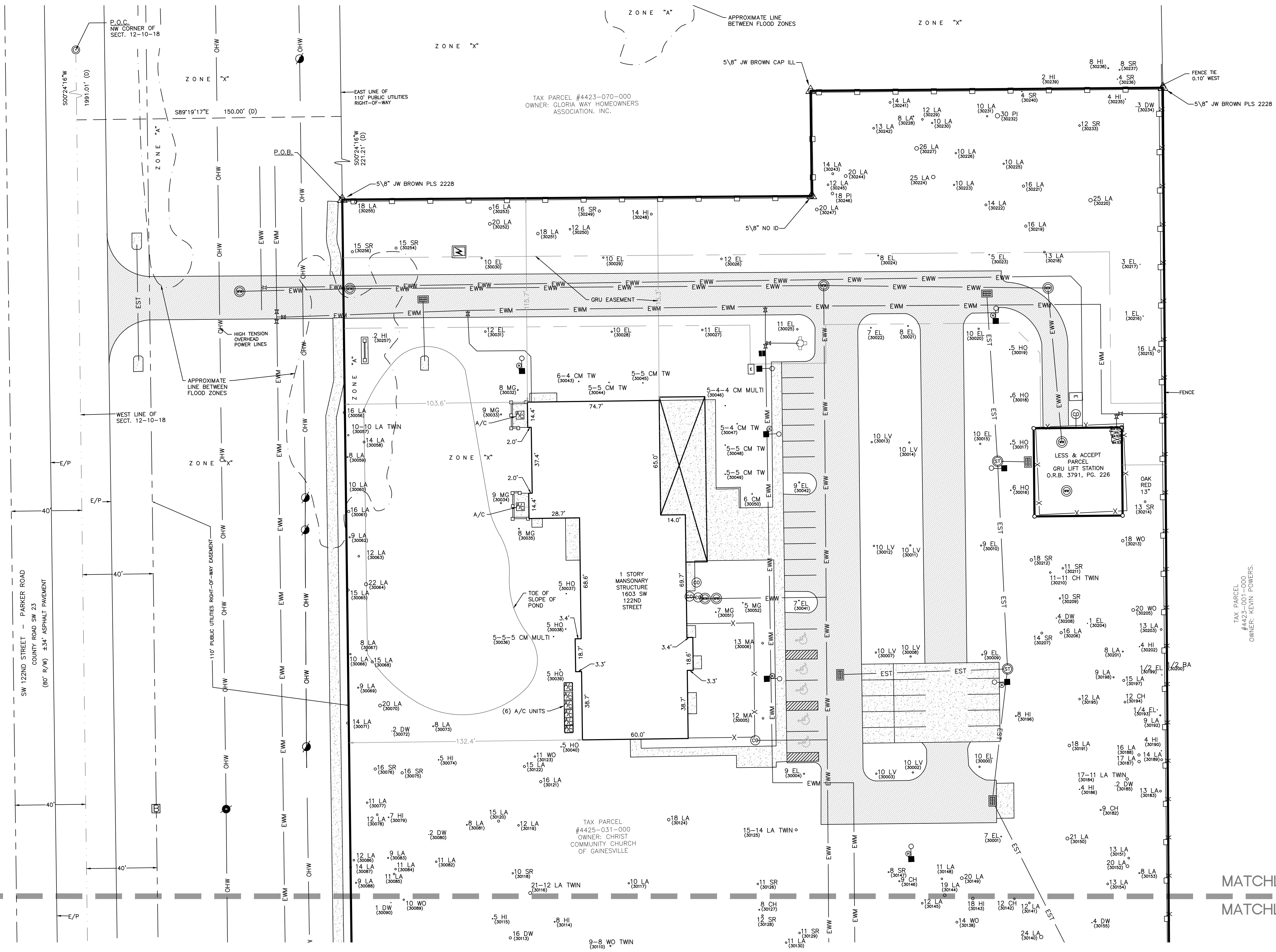


BOUNDARY & FIXED IMPROVEMENTS SURVEY	
<b>CERTIFIED TO:</b>	
1. CHRIST COMMUNITY CHURCH	Scale: 1"=50'
	Proj. No.: 223-23-01
	Drawn: T. Hensley
	Checked: R. White
	Dwg. Name: 223-23-01-BS1
	Dwg. Date: 4/7/2023
	Field Book: N/A
	Pages: N/A
	Sheet: 1 of 3

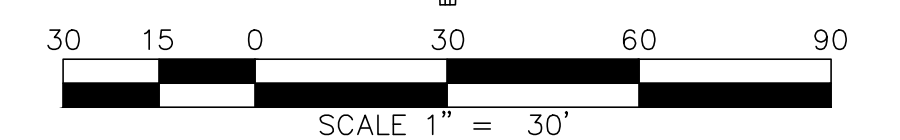
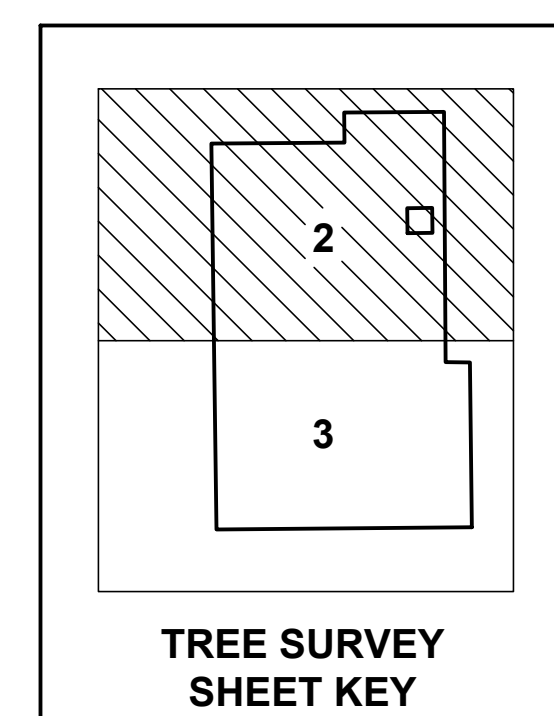


# TREE SURVEY

## IN SECTION 12, TOWNSHIP 10 SOUTH, RANGE 18 EAST, ALACHUA COUNTY, FLORIDA



- LEGEND:**
- = BOUNDARY LINE
  - - - = TAX PARCEL LINE
  - - - = RIGHT-OF-WAY LINE
  - - - = SECTION LINE
  - - - = BUILDING OUTLINE
  - - - = FLOOD ZONE LINE
  - - - = HOGWIRE FENCE LINE
  - - - = WOOD FENCE LINE
  - - - = TOE OF SLOPE
  - - - = OVERHEAD WIRE
  - - - = WATER MAIN
  - - - = WASTEWATER LINE
  - - - = STORM LINE
- ABBREVIATIONS:**
- A/C = AIR CONDITIONER
  - ACLUM = ALACHUA COUNTY FUTURE LAND USE MAP 2020
  - B/C = BACK OF CURB
  - B = BASELINE
  - C.A.T.V. = CABLE ANTENNAED TELEVISION
  - C.B.(S) = CONCRETE BLOCK (& STUCCO)
  - C = CENTERLINE
  - C.O. = CLEANOUT
  - C.L.F. = CHAIN LINK FENCE
  - C.M.P. = CORRUGATED METAL PIPE
  - CONC = CONCRETE
  - ELEV. = ELEVATION
  - E/P = EDGE OF PAVEMENT
  - F.O.D.O.T. = FLORIDA DEPARTMENT OF TRANSPORTATION
  - F.F. = FINISH FLOOR
  - F.L.U. = FUTURE LAND USE
  - ID = IDENTIFICATION
  - (L) = FURNISHED LEGAL DESCRIPTION DATA (47x47) P.L.S. #748
  - = METAL POWER POLE
  - ⊕ = WOOD POWER POLE
  - ⊕ = TELEPHONE RISER
  - ⊕ = BELLSOUTH MARKER
  - ⊕ = FOUND NAIL NO IDENTIFICATION
  - ⊕ = AIR CONDITIONER
  - ⊕ = LIGHT POLE
  - ⊕ = CLEAN OUT
  - ♿ = HANDICAP PARKING
  - ⊕ = WATER METER
  - ⊕ = STORM SEWER MANHOLE
  - ⊕ = SANITARY SEWER MANHOLE
  - ⊕ = WATER WELL
  - ⊕ = STORM INLET
  - ⊕ = HANDHOLE
  - ⊕ = FIRE HYDRANT
  - ⊕ = TRANSFORMER
  - ⊕ = UTILITY BOX
  - OAK LA 8" ⊕ = TREE - SPECIES AND SIZE
  - DOGWOOD 4" ⊕ = TREE - SPECIES AND SIZE
  - 12 MA ⊕ = TREE - SPECIES AND SIZE
  - ⊕ = ASPHALT SURFACE
  - ⊕ = CONCRETE SURFACE
- TREES:**
- BAY RED = RED BAY TREE
  - CEDAR = CEDAR TREE
  - CHERRY = CHERRY TREE
  - CM = CRAPE MYRTLE TREE
  - DOGWOOD = DOGWOOD TREE
  - EL = ELM TREE
  - HICKORY M = MOCKERNUT HICKORY TREE
  - HICKORY PIGNUT = PIGNUT HICKORY TREE
  - HO = HOLLY TREE
  - LV = LIVE OAK TREE
  - MA = MAPLE TREE
  - MG = MAGNOLIA TREE
  - MULTI = MULTIPLE TRUNKS
  - OAK LA = LAUREL OAK TREE
  - OAK LI = LIVE OAK TREE
  - OAK RED = RED OAK TREE
  - OAK SOUTHERN RED = SOUTHERN RED OAK TREE
  - OAK WATER = WATER OAK TREE
  - PINE LL = LOBLOLLY PINE TREE



MATCHLINE - SHEET 2  
MATCHLINE - SHEET 3

**CHRIST COMMUNITY CHURCH**  
1603 SW 122ND STREET  
GAINESVILLE, FLORIDA

**TREE SURVEY**

CIVIL ENGINEERING | LAND PLANNING  
SURVEYING | CONSTRUCTION SERVICES

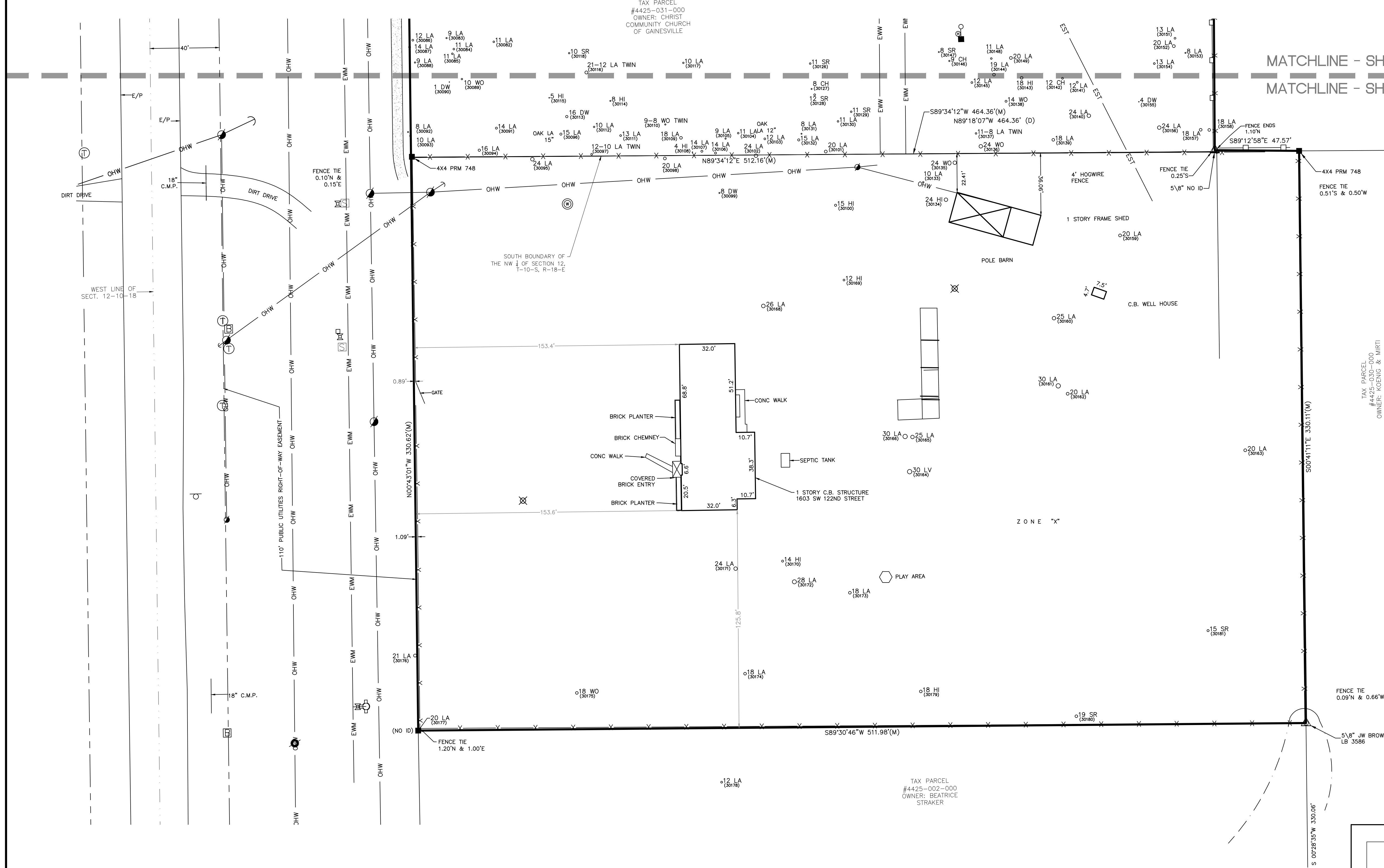
Scale:	1"=30'
Proj. No.:	223-23-01
Drawn:	T. Hensley
Checked:	R. White
Dwg. Name:	223-23-01-B51
Dwg. Date:	1/17/2023
Field Book:	N/A
Pages:	N/A
Sheet:	2 of 3

3530 NW 43rd Street | Gainesville, FL  
4420 US-1, S. Suite 111 St. Augustine, FL  
1826 Ox Bottom Lane | Tallahassee, FL  
Toll Free: (844) Go-JBPro



# TREE SURVEY

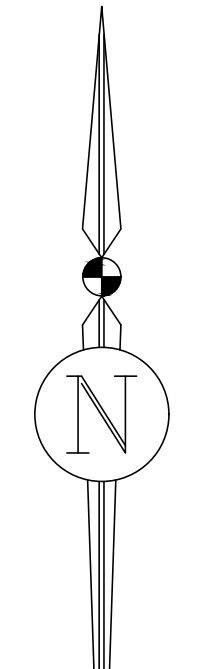
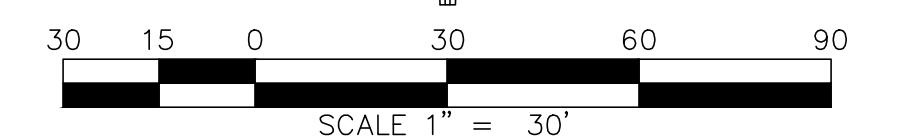
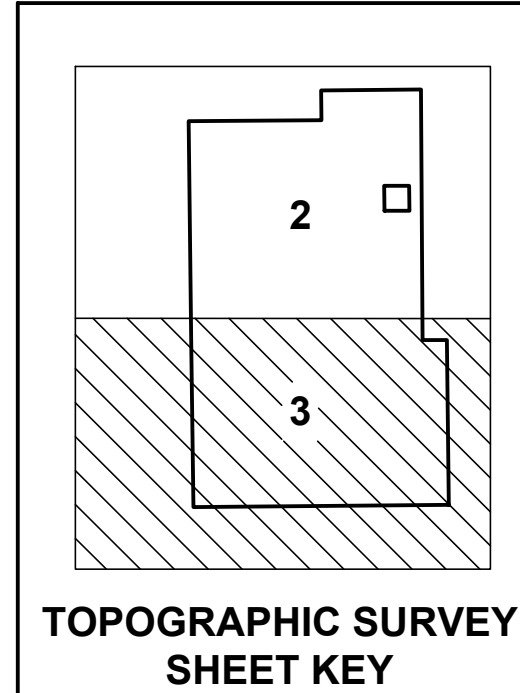
IN SECTION 12, TOWNSHIP 10 SOUTH, RANGE 18 EAST, ALACHUA COUNTY, FLORIDA



MATCHLINE - SHEET 2  
MATCHLINE - SHEET 3

- LEGEND:**
- = BOUNDARY LINE
  - - - = TAX PARCEL LINE
  - - - = RIGHT-OF-WAY LINE
  - - - = SECTION LINE
  - = BUILDING OUTLINE
  - - - = FLOOD ZONE LINE
  - - - = HOGWIRE FENCE LINE
  - - - = WOOD FENCE LINE
  - - - = TOE OF SLOPE
  - - - = OVERHEAD WIRE
  - - - = WATER MAIN
  - - - = WASTEWATER LINE
  - - - = STORM LINE
- (UNLESS OTHERWISE NOTED)
- ⊙ = FOUND 5/8" REBAR & CAP, P.L.S. #2228
  - ⊙ = FOUND CONC MONUMENT (4"x4") P.L.S. #748
  - ⊙ = METAL POWER POLE
  - ⊙ = WOOD POWER POLE
  - ⊙ = TELEPHONE RISER
  - ⊙ = BELLSOUTH MARKER
  - ⊙ = FOUND NAIL NO IDENTIFICATION
  - ⊙ = AIR CONDITIONER
  - ⊙ = LIGHT POLE
  - ⊙ = CLEAN OUT
  - ⊙ = HANDICAP PARKING
  - ⊙ = WATER METER
  - ⊙ = STORM SEWER MANHOLE
  - ⊙ = SANITARY SEWER MANHOLE
  - ⊙ = WATER WELL
  - ⊙ = STORM INLET
  - ⊙ = HANDHOLE
  - ⊙ = FIRE HYDRANT
  - ⊙ = TRANSFORMER
  - ⊙ = UTILITY BOX
  - ⊙ = TREE - SPECIES AND SIZE
  - ⊙ = TREE - SPECIES AND SIZE
  - ⊙ = ASPHALT SURFACE
  - ⊙ = CONCRETE SURFACE

- ABBREVIATIONS:**
- A/C = AIR CONDITIONER
  - ACLUM = ALACHUA COUNTY FUTURE LAND USE MAP 2020
  - B/C = BACK OF CURB
  - BL = BASELINE
  - C.A.T.V. = CABLE ANTENNAED TELEVISION
  - C.B.(S.) = CONCRETE BLOCK (& STUCCO)
  - C. = CENTERLINE
  - C.O. = CLEANOUT
  - C.L.F. = CHAIN LINK FENCE
  - C.M.P. = CORRUGATED METAL PIPE
  - CONC = CONCRETE
  - ELEV. = ELEVATION
  - E/P = EDGE OF PAVEMENT
  - F.D.O.T. = FLORIDA DEPARTMENT OF TRANSPORTATION
  - F.F. = FINISH FLOOR
  - F.L.U. = FUTURE LAND USE
  - ID = IDENTIFICATION
  - (L) = FURNISHED LEGAL DESCRIPTION DATA
  - (M) = FIELD MEASURED DATA
  - N.T.S. = NOT TO SCALE
  - OE = OVERHEAD ELECTRIC
  - O.R.(B.) = OFFICIAL RECORDS (BOOK)
  - OU = OVERHEAD UTILITIES
  - (P) = RECORD PLAT DATA
  - P.C. = POINT OF CURVATURE
  - PG. = PAGE
  - P.I. = POINT OF INTERSECTION
  - P.L.S. = PROFESSIONAL LAND SURVEYOR
  - P.R.M. = PERMANENT REFERENCE MONUMENT
  - P.O.B. = POINT OF BEGINNING
  - P.O.C. = POINT OF COMMENCEMENT
  - P.O.R. = POINT OF REFERENCE
  - P.O.T. = POINT OF TERMINUS
  - P.U.E. = PUBLIC UTILITIES EASEMENT
  - R.C.P. = REINFORCED CONCRETE PIPE
  - R.W. = RIGHT-OF-WAY
  - SECT. = SECTION
  - S.S. = SANITARY SEWER
  - SQ FT = SQUARE FEET
  - TYP. = TYPICAL
  - UE = UNDERGROUND UTILITIES
- TREES:**
- BAY RED = RED BAY TREE
  - CEDAR = CEDAR TREE
  - CHERRY = CHERRY TREE
  - CM = GRAPE MYRTLE TREE
  - DOGWOOD = DOGWOOD TREE
  - EL = ELM TREE
  - HICKORY M = MOCKERNUT HICKORY TREE
  - HICKORY PIGNUT = PIGNUT HICKORY TREE
  - HO = HOLLY TREE
  - LV = LIVE OAK TREE
  - MA = MAPLE TREE
  - MG = MAGNOLIA TREE
  - MULTI = MULTIPLE TRUNKS
  - OAK LA = LAUREL OAK TREE
  - OAK LI = LIVE OAK TREE
  - OAK RED = RED OAK TREE
  - OAK SOUTHERN RED = SOUTHERN RED OAK TREE
  - OAK WATER = WATER OAK TREE
  - PINE LL = LOBLOLLY PINE TREE



**CHRIST COMMUNITY CHURCH**  
1603 SW 122ND STREET  
GAINESVILLE, FLORIDA

**TREE SURVEY**

**JBPro**  
CIVIL ENGINEERING | LAND PLANNING  
SURVEYING | CONSTRUCTION SERVICES

3530 NW 43rd Street | Gainesville, FL  
4420 US-1 S, Suite 111 | St. Augustine, FL  
1826 Ox Bottom Lane | Tallahassee, FL  
Toll Free: (844) Go-JBPro

Scale:	1"=30'
Proj. No.:	223-23-01
Drawn:	T. Hensley
Checked:	R. White
Dwg. Name:	223-23-01-BS1
Dwg. Date:	4/7/2023
Field Book:	N/A
Pages:	N/A
Sheet:	3 of 3