

Figure 36. Biodiversity hot spots shown in relation to the Project Site and surrounding area.

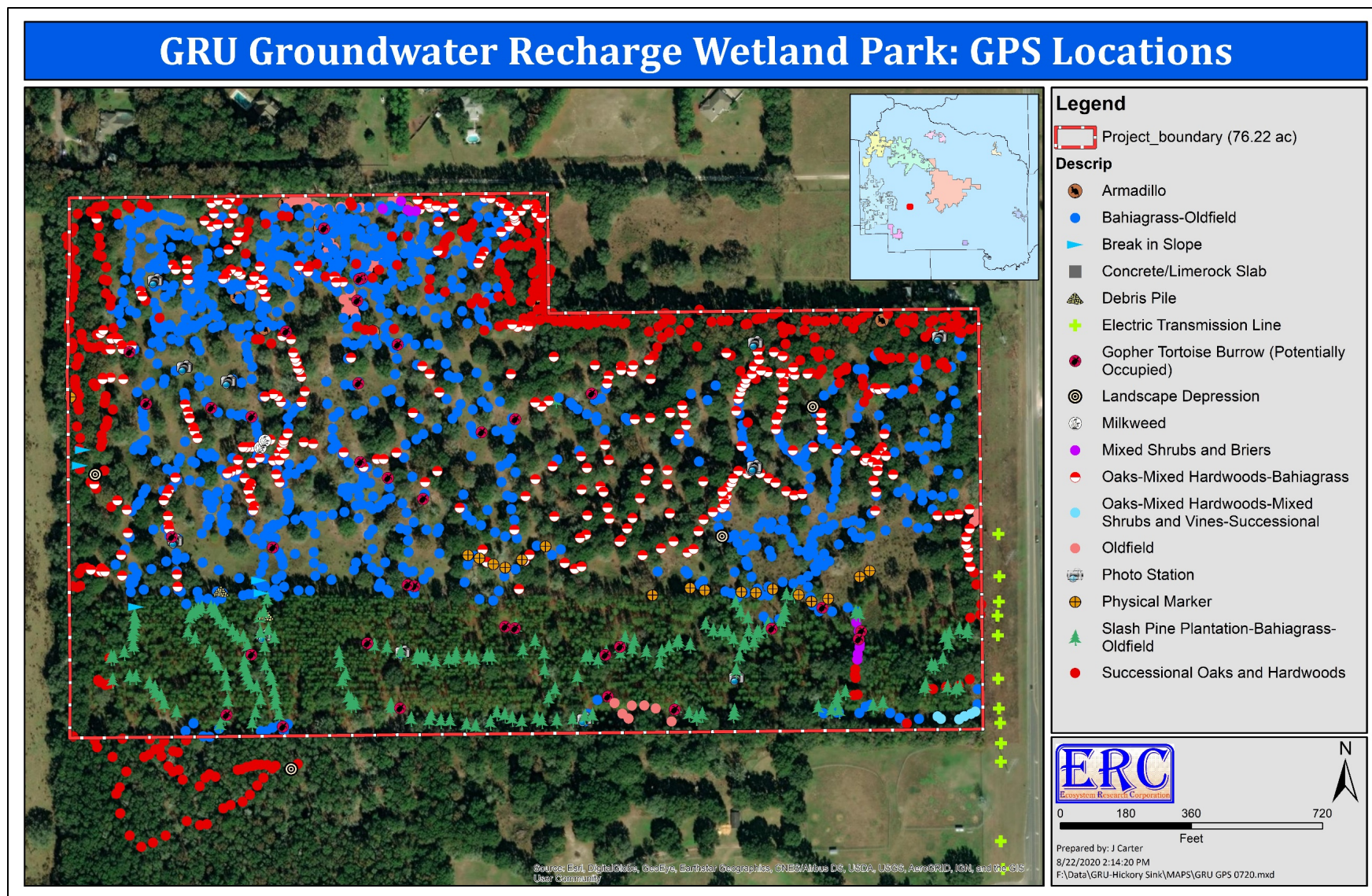


Figure 37. GPS locations where site-specific data were collected within the Project Site.

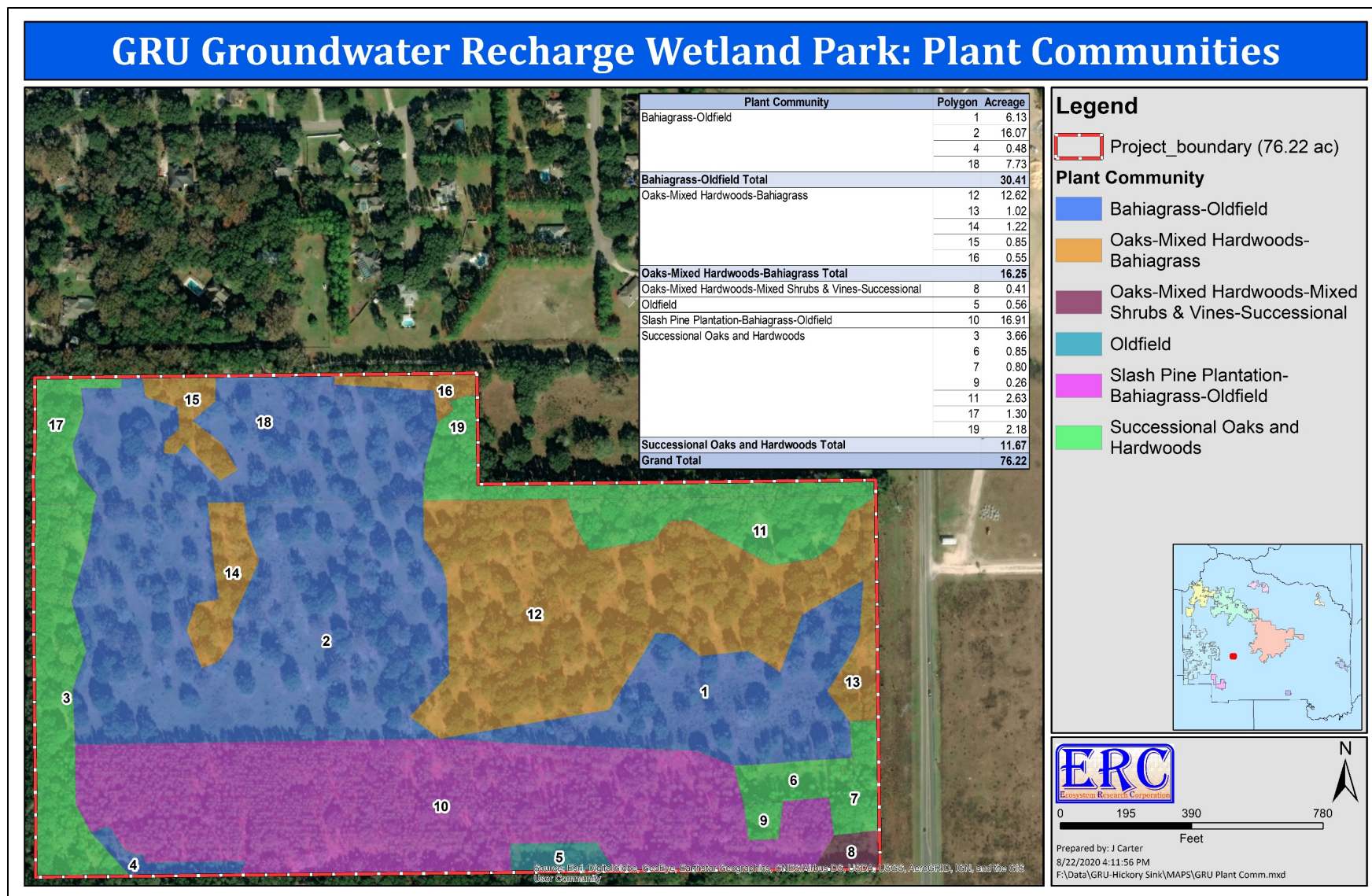


Figure 38. Plant communities existing on the Project Site.

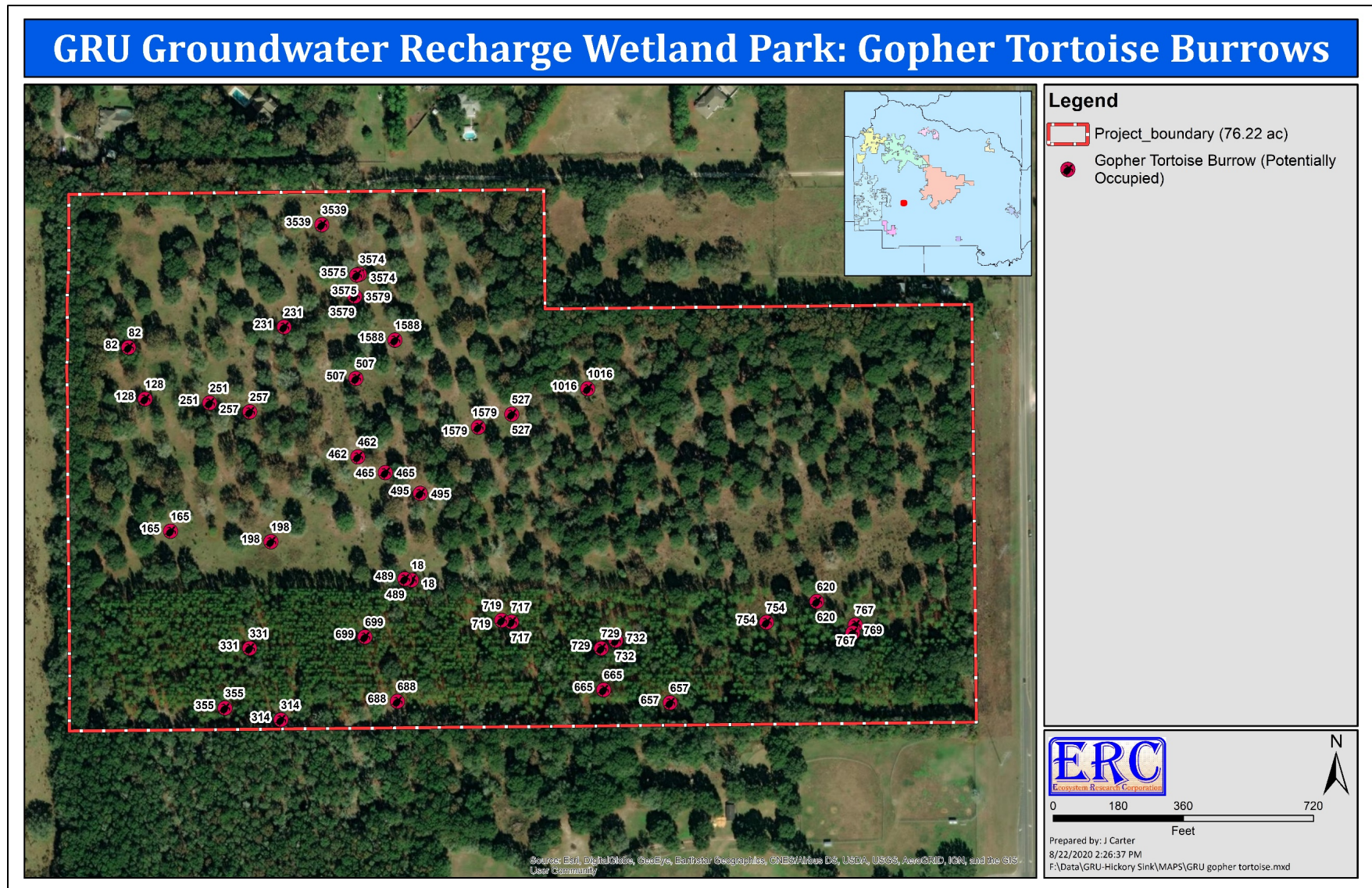
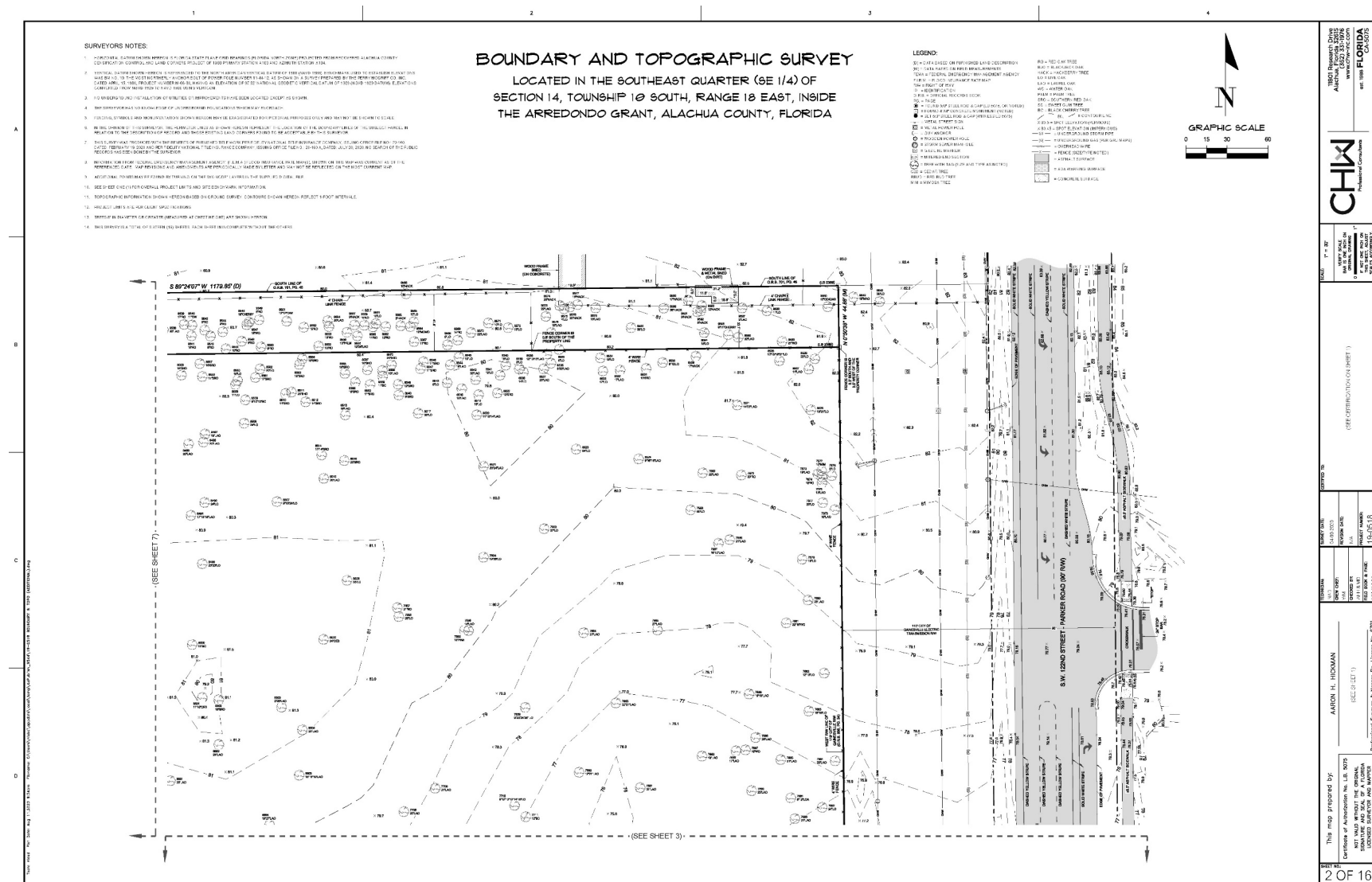
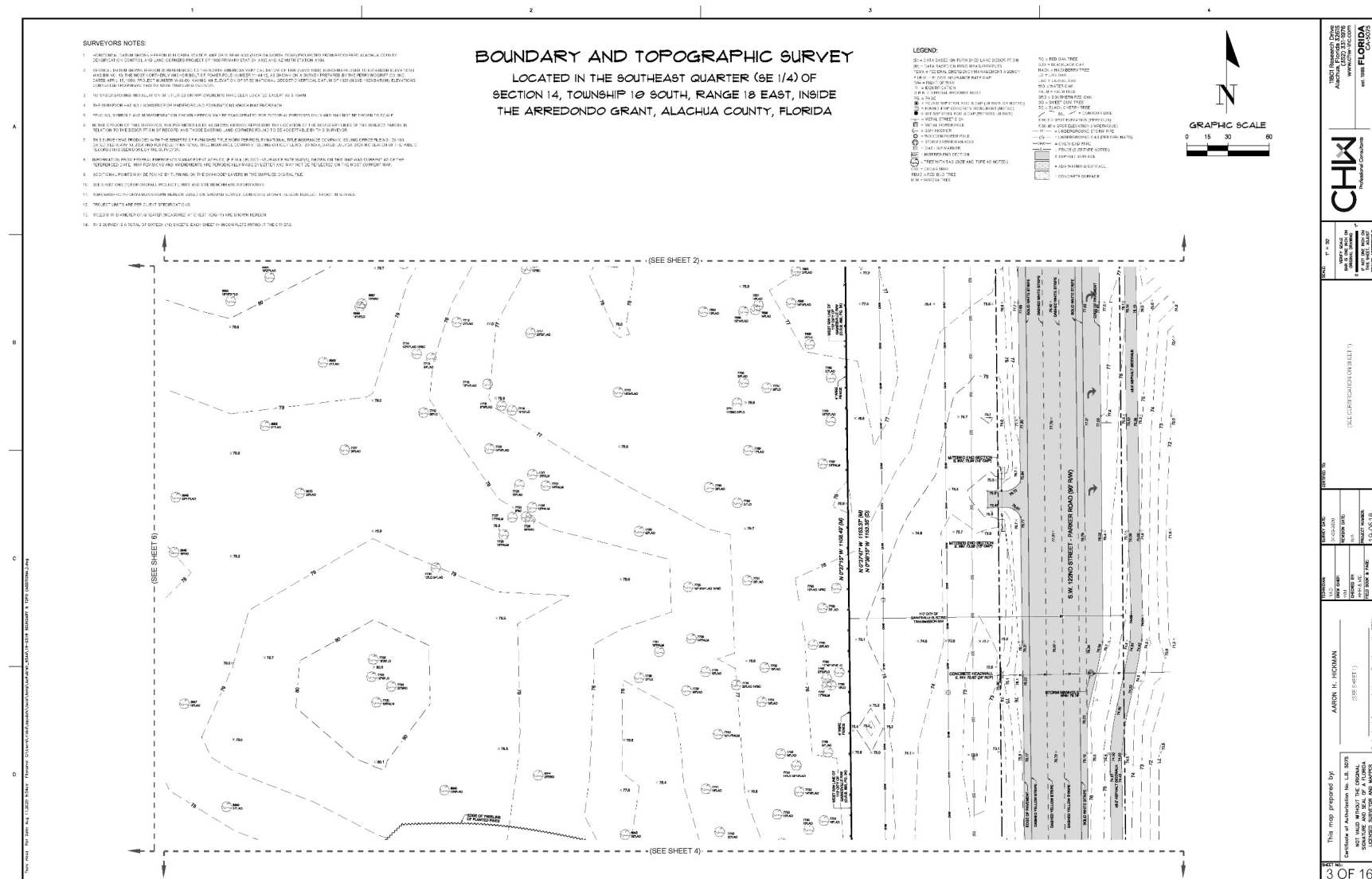


Figure 39. Locations of gopher tortoise burrows within the Project Site.

Attachment A: Project Site Boundary, Topographic and Tree Survey



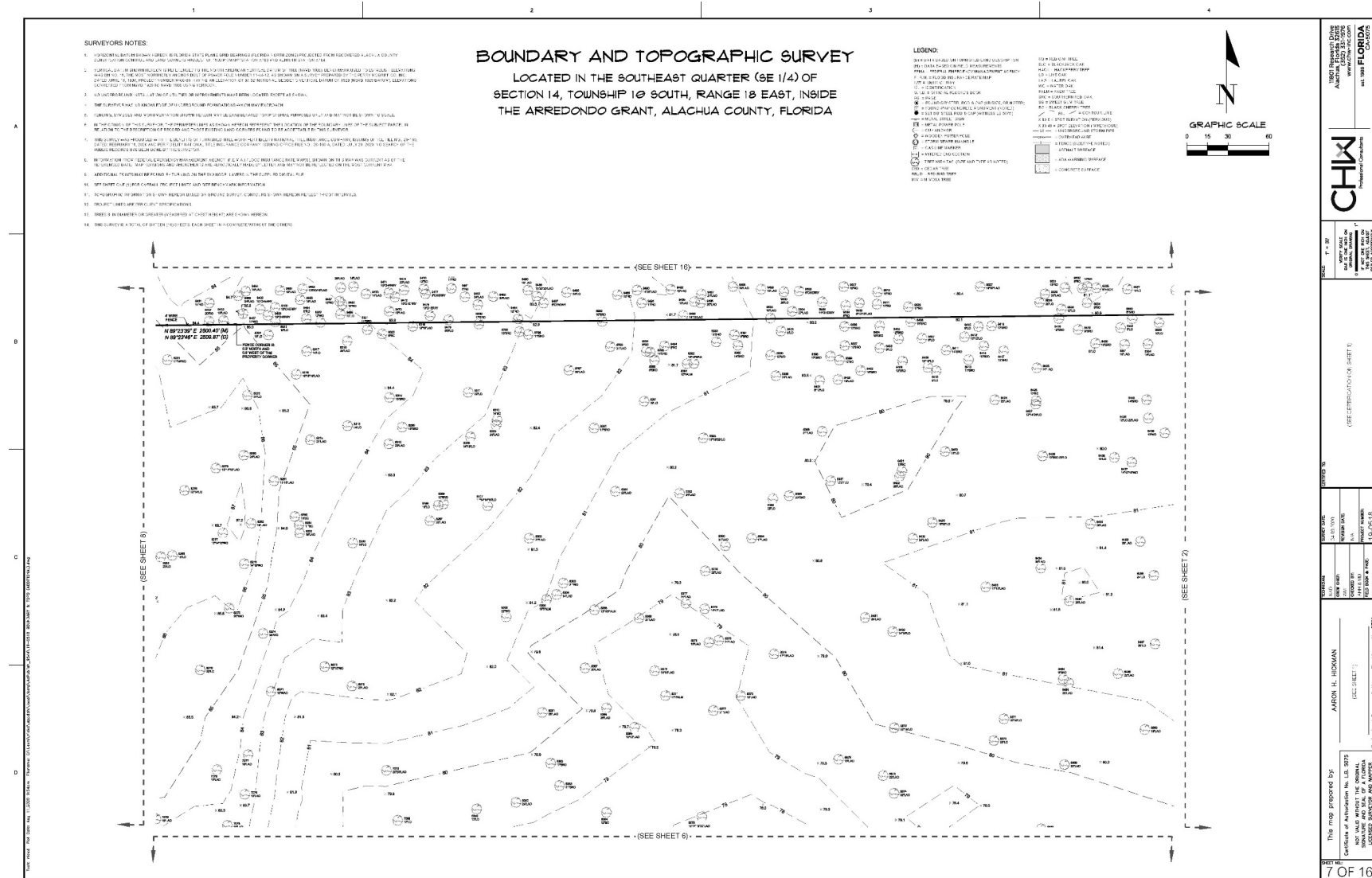










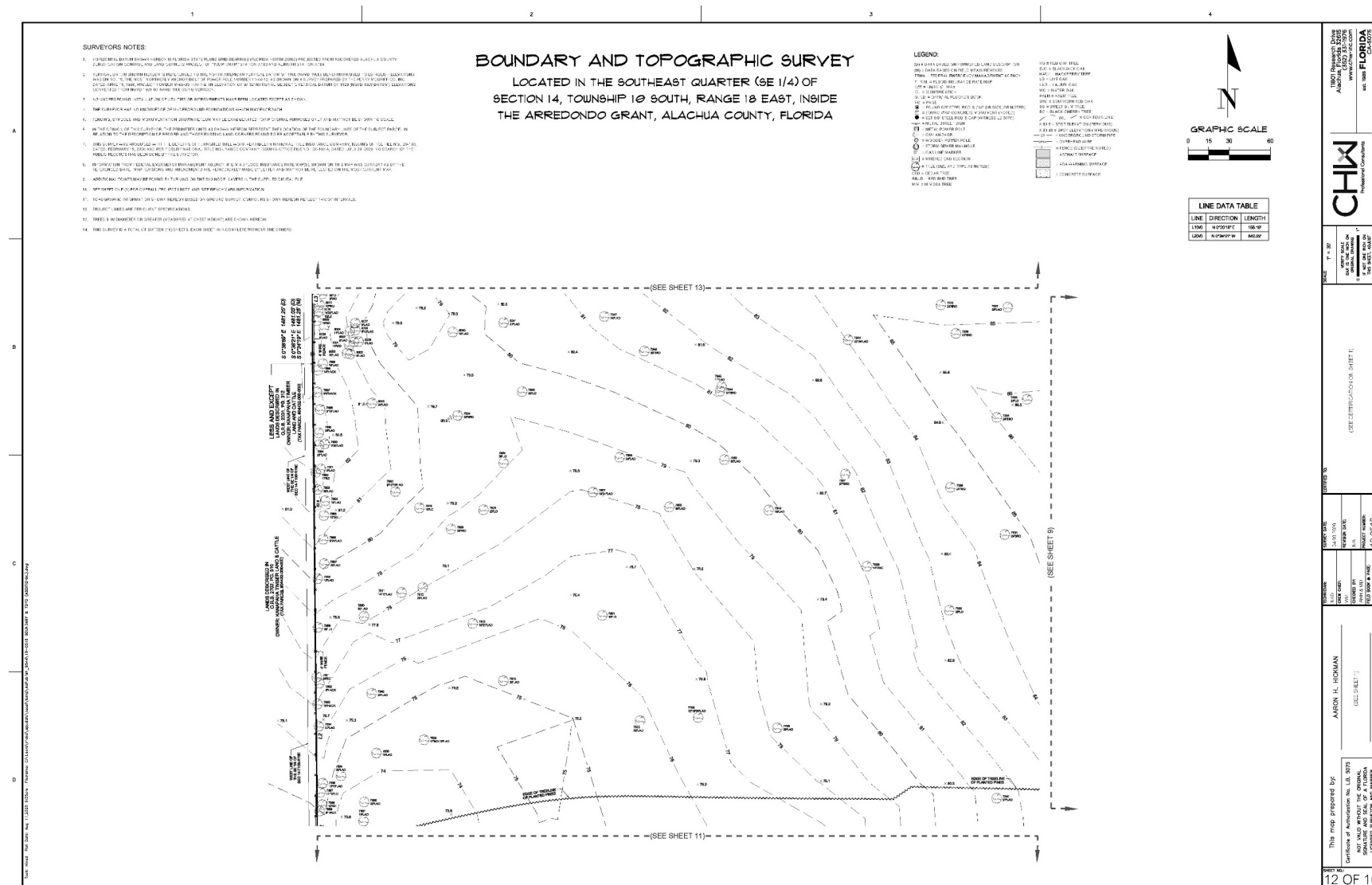






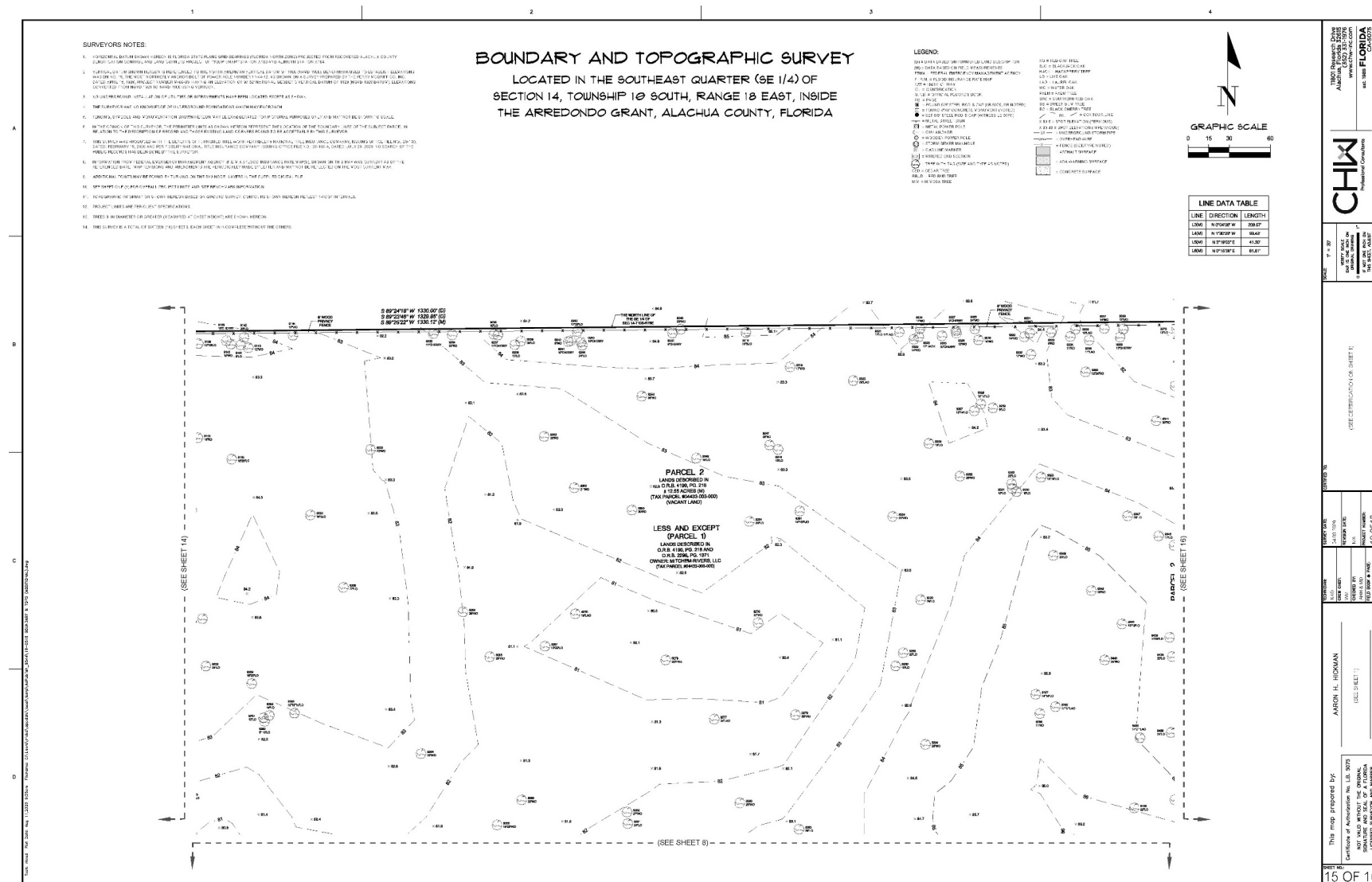














Attachment B: Photographic Atlas of the GRU Groundwater Recharge Wetland Park Proposed Project Site

Figure B-1.	Photo stations where photos showing current habitat conditions on the Project Site were taken.....	81
Photo B-1.	View of Bahiagrass-Oldfield habitat as seen looking northeast from GPS location 142.	82
Photo B-2.	View of Bahiagrass-Oldfield habitat as seen looking southeast from GPS location 166.	83
Photo B-3.	View of Bahiagrass-Oldfield habitat as seen looking east from GPS location 245.....	84
Photo B-4.	View of Slash Pine Plantation-Bahiagrass-Oldfield Habitat as seen looking east from GPS location 303.	85
Photo B-5.	View of Slash Pine Plantation-Bahiagrass-Oldfield Habitat as seen looking west-northwest from GPS location 650.....	86
Photo B-6.	View of Slash Pine Plantation-Bahiagrass-Oldfield Habitat as seen looking north from GPS location 669.....	87
Photo B-7.	View of Slash Pine Plantation-Bahiagrass-Oldfield Habitat as seen looking east from GPS location 703.	88
Photo B-8.	View of Oaks-Mixed Hardwoods-Bahiagrass habitat as seen looking south-southeast from GPS location 881.....	89
Photo B-9.	View of Successional Oaks and Hardwoods habitat as seen looking northeast from GPS location 902.....	90
Photo B-10.	View of Successional Oaks and Hardwoods habitat as seen looking southeast from GPS location 978.....	91
Photo B-11.	View of Bahiagrass-Oldfield habitat as seen looking north from GPS location 3754.....	92

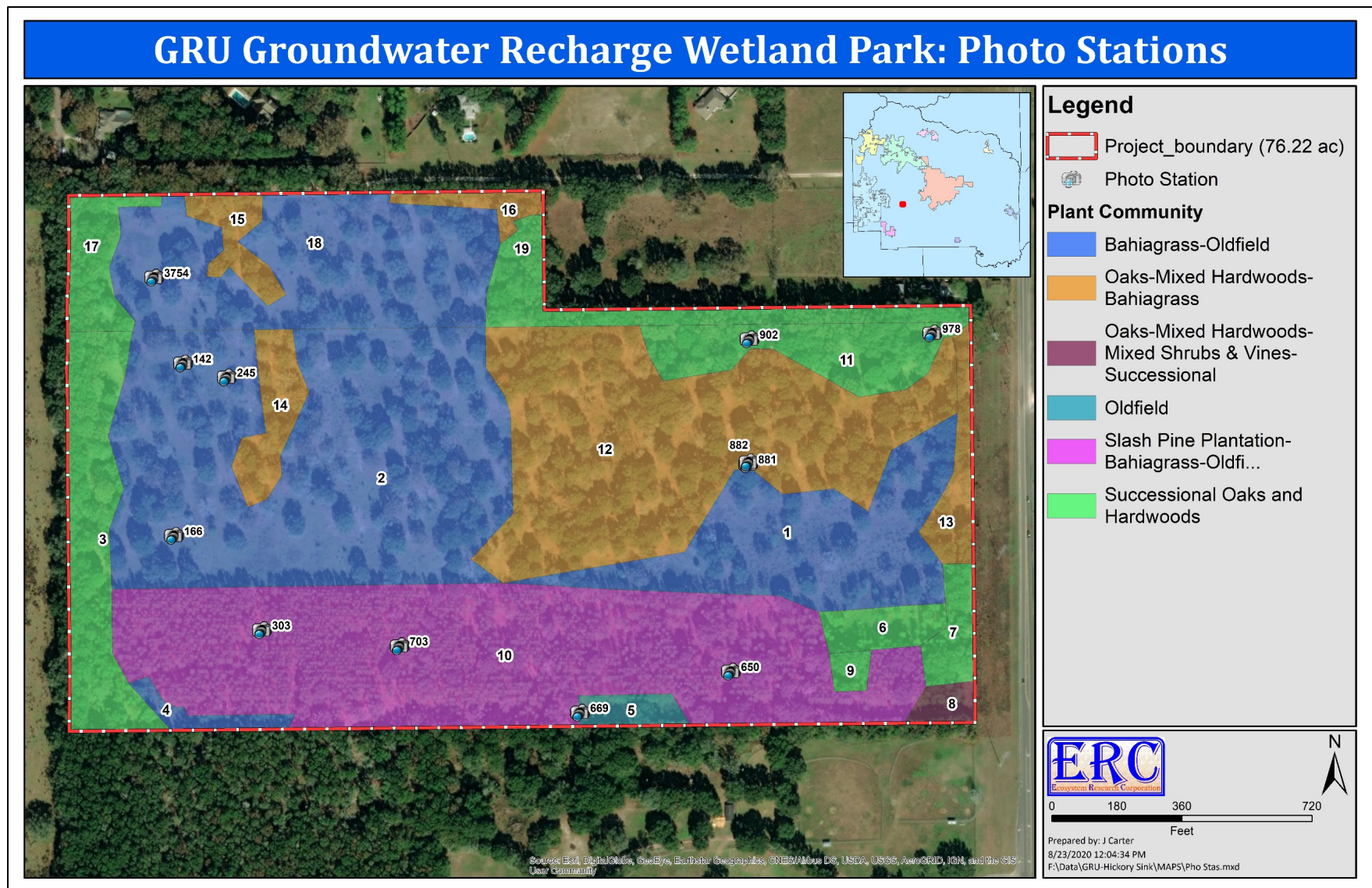


Figure B-1. Photo stations where photos showing current habitat conditions on the Project Site were taken.



Photo B-1. View of Bahiagrass-Oldfield habitat as seen looking northeast from GPS location 142.



Photo B-2. View of Bahiagrass-Oldfield habitat as seen looking southeast from GPS location 166.



Photo B-3. View of Bahiagrass-Oldfield habitat as seen looking east from GPS location 245.



Photo B-4. View of Slash Pine Plantation-Bahiagrass-Oldfield Habitat as seen looking east from GPS location 303.



Photo B-5. View of Slash Pine Plantation-Bahiagrass-Oldfield Habitat as seen looking west-northwest from GPS location 650.



Photo B-6. View of Slash Pine Plantation-Bahiagrass-Oldfield Habitat as seen looking north from GPS location 669.



Photo B-7. View of Slash Pine Plantation-Bahiagrass-Oldfield Habitat as seen looking east from GPS location 703.



Photo B-8. View of Oaks-Mixed Hardwoods-Bahiagrass habitat as seen looking south-southeast from GPS location 881.



Photo B-9. View of Successional Oaks and Hardwoods habitat as seen looking northeast from GPS location 902.



Photo B-10. View of Successional Oaks and Hardwoods habitat as seen looking southeast from GPS location 978.



Photo B-11. View of Bahiagrass-Oldfield habitat as seen looking north from GPS location 3754.