

DEVELOPMENT REVIEW CHECKLIST:

LANDSCAPE PLAN NOTES AND CALCULATIONS:

TREE CANOPY	REFER TO SHEET C1.2 FOR EXISTING RETAINED CANOPY CALCULATIONS L1.1 FOR FUTURE 20 YEAR CANOPY CALCULATIONS
TABULAR TREE LISTS	REFER TO SHEET L1.1 FOR REGULATED TREE LIST
LANDSCAPE CALCULATIONS	REFER TO SHEET C0.00 FOR BUFFER REQUIREMENTS
TREE PROTECTION	REFER TO SHEET C1.0 FOR EXISTING TREE LOCATIONS AND BARRICADES
TREE PLANTING PLANT SCHEDULE GENERAL NOTES	NO TREE PLANTING NOTES NO PLANT SCHEDULE PROPOSED REFER TO SHEET L1.1 FOR PLANTING REQUIREMENTS
PLAN LEGEND	SEE SHEET C0.1 FOR STANDARD ABBREVIATIONS AND LEGEND

TREE PRESERVATION PLAN:

TREE PROTECTION	REFER TO SHEET C1.0 FOR EXISTING TREE LOCATIONS AND BARRICADES C1.2 FOR GRAPHIC EXISTING CANOPY DELINEATION C1.0 FOR TREE PROTECTION FENCING DETAIL
-----------------	---

DETAILED LANDSCAPE PLAN:

PROPOSED PLANTS SCHEDULE PLANTING NOTES STORMWATER BASINS BUFFERS AND SCREENING SILT FENCE / BARRICADES FINAL GRADE AND CONTOURS UTILITIES AND LIGHTING	NO PROPOSED PLANTINGS NO PLANTING SCHEDULE NO PROPOSED PLANTINGS THERE ARE PROPOSED SWALES & NO PROPOSED STORMWATER BASINS REFER TO SHEETS L2.1 FOR BUFFER AND SCREENING REFER TO SHEET C5.0 FOR SILT FENCE AND C1.0 TREE BARRICADE LOCATIONS REFER TO C3.0 FOR FINAL GRADE AND CONTOURS REFER TO SHEET C4.0 FOR UTILITY LOCATIONS
--	---

EXISTING CANOPY RETAINED

NOTES AND REQUIREMENT

RETAIN A MINIMUM 20% OF EXISTING TREE CANOPY.

CALCULATIONS FOR THE EXISTING CANOPY ARE BASED ON A DELINEATION OF CANOPY AREAS FROM ANALYSIS OF A SITE AERIAL, TREE SURVEY, AND ON-SITE OBSERVATION. DELINEATION IS SHOWN ON THE TREE CANOPY PLAN (C1.2).

EXISTING CANOPY RETAINED CALCULATIONS

EXISTING CANOPY:	449,407 SF (10.32 AC)
LESS CANOPY REMOVED FOR PROPOSED LIMEROCKROAD: WITH ASSOCIATED STORMWATER AND SITE INFRASTRUCTURE IMPROVEMENTS	6,456 SF (0.15 AC)
EXISTING CANOPY TO BE RETAINED (449,407 SF – 6,456 SF)	442,951 SF (10.17 AC)
PERCENTAGE EXISTING CANOPY RETAINED:	98.6 %

FUTURE 20 YEAR CANOPY

NOTES AND REQUIREMENT

SEC. 407.41 (n) DEMONSTRATE THAT WITHIN 20 YEARS, 30% OF THE SITE WILL BE UNDER TREE CANOPY. RURAL/AG SUBDIVISIONS WITH UNPAVED ROADS AND FAMILY HOMESTEAD SUBDIVISIONS ARE EXEMPT FROM THIS PROVISION.

CALCULATIONS FOR THE FUTURE 20 YEAR CANOPY ARE BASED ON THE EXISTING CANOPY RETAINED AREA PLUS THE COMBINED 20 YEAR CANOPIES FOR ALL PROPOSED TREES.

FUTURE 20 YEAR CANOPY CALCULATIONS

EXISTING CANOPY TO BE RETAINED (FROM PREVIOUS CALCULATION)	442,951 SF
PROPOSED STREET TREE CANOPY (SEE FUTURE 20 YR CANOPY SPECIES TABLE)	0 SF
PROPOSED BASIN TREE CANOPY (SEE FUTURE 20 YR CANOPY SPECIES TABLE)	0 SF
TOTAL FUTURE TREE CANOPY	442,951 SF
PERCENTAGE OF SITE UNDER FUTURE TREE CANOPY (442,951 SF / 1,708,423 SF)	26 %

FUTURE CANOPY NOTE

THIS PROJECT IS EXEMPT.

REGULATED TREE LIST

ID#	BOTANICAL NAME	DBH (inches)	PRESERVATION	REMOVED	MITIGATION
40270	Pinus spp.	12	1		
40271	Pinus spp.	12	1		
40272	Pinus spp.	12	1		
40273	Quercus nigra	23	1		
40281	Liquidambar stryaciflua	18	1		
40282	Quercus nigra	21	1		
40283	Quercus nigra	24	1		
40284	Quercus nigra	14	1		
40285	Quercus nigra	24	1		
40286	Pinus spp.	13	1		
40287	Quercus nigra	24	1		
40288	Quercus nigra	22	1		
40289	Quercus nigra	21	1		
40292	Quercus nigra	19	1		
40293	Quercus nigra	16	1		
40294	Quercus nigra	15	1		
40295	Quercus nigra	14	1		
40297	Quercus nigra	23	1		
40298	Quercus nigra	32	1		
40299	Quercus nigra	13	1		
40300	Quercus nigra	12	1		
40308	Quercus nigra	24	1		
40309	Quercus nigra	26	1		
40310	Liquidambar stryaciflua	18	1		
40311	Liquidambar stryaciflua	14	1		
40312	Quercus nigra	23	1		
40313	Quercus nigra	20	1		
40314	Quercus nigra	21	1		
40315	Quercus nigra	15	1		
40316	Quercus nigra	26-25-22-21	1		
40317	Quercus nigra	14	1		
40318	Quercus nigra	22	1		
40319	Quercus nigra	28	1		
40320	Quercus nigra	11	1		
40321	Pinus spp.	13	1		
40324	Quercus nigra	24	1		
40325	Pinus spp.	20	1		
40326	Pinus spp.	34	1		
40327	Quercus nigra	32	1		
40328	Pinus spp.	32	1		
40338	Quercus nigra	20		1	None*
40339	Quercus nigra	14		1	None*
40340	Quercus nigra	12		1	None*
40341	Quercus nigra	16	1		
40344	Quercus nigra	16	1		
40346	Liquidambar stryaciflua	17	1		
40351	Platanus occidentalis	39	1		
40352	Quercus virginiana	61	1		
40353	Quercus virginiana	65	1		
40354	Quercus virginiana	67	1		
40360	Quercus nigra	38	1		
41343	Quercus nigra	30	1		
41344	Quercus nigra	37-36	1		
41345	Quercus nigra	28	1		
41346	Quercus nigra	23	1		
41347	Quercus nigra	28	1		
41348	Quercus virginiana	49	1		
41349	Quercus virginiana	59	1		
41350	Quercus nigra	28		1	None*
41351	Quercus nigra	29		1	None*
41352	Quercus nigra	28		1	None*
41353	Quercus virginiana	26	1		
41354	Quercus nigra	20	1		
41355	Quercus nigra	23	1		
41356	Quercus nigra	26	1		
41357	Quercus nigra	13	1		
41358	Quercus nigra	11	1		
41359	Quercus nigra	21	1		
41360	Quercus virginiana	25	1		
41361	Quercus virginiana	22	1		
41372	Quercus nigra	16-15-9	1		
41373	Quercus nigra	14	1		
41374	Quercus nigra	18-16	1		
41375	Quercus nigra	23	1		
41376	Quercus nigra	36	1		
41377	Quercus nigra	16	1		
41378	Quercus nigra	18	1		
41379	Quercus nigra	25	1		
41380	Quercus nigra	27	1		
41382	Liquidambar stryaciflua	12	1		
41383	Quercus nigra	17	1		
41384	Liquidambar stryaciflua	15	1		

* SEC.406.13(b)(4) NO MITIGATION REQUIRED FOR ABUNDANT SPECIES SUCH AS LOBLOLLY PINE, SLASH PINE, AND SWEETGUM UNDER TWENTY (20) INCHES DBH, AND LAUREL OAKS AND WATER OAKS UNDER (30) INCHES DBH, REGARDLESS OF CONDITION.

LANDSCAPE NOTES - GENERAL

GENERAL

CONTRACTOR SHALL VERIFY THE LOCATION OF UTILITIES AND EXISTING TREES AND VEGETATION PRIOR TO THE COMMENCEMENT OF LANDSCAPE WORK.

INVASIVE EXOTIC PLANT MATERIAL

REMOVAL OR ERADICATION OF ALL PROHIBITED, EXOTIC, AND DISCOURAGED NON-NATIVE VEGETATION, IDENTIFIED IN SUBSECTION 406.10(E), SHALL BE COMPLETED FOR THE ENTIRE PARCEL CONCURRENT WITH THE PERMITTED TREE REMOVAL AND PRIOR TO CERTIFICATE OF COMPLETION OF THE CONSTRUCTION PERMIT, PER 406.12(A)1.

GRASSING

ALL DISTURBED UNPAVED AREAS SHALL BE GRASSED, MULCHED OR PLANTED. AREAS TO BE TURF GRASS SHALL BE GRADED SMOOTH AND EITHER GRASSED WITH SOD THAT IS CERTIFIED FREE OF NOXIOUS WEEDS OR SEEDS BY A HYDRO-SEED PROCESS OR SEEDS WITH A STRAW MULCH COVER.

TREE CANOPY RETENTION EASEMENT

TREES WITHIN THE TREE CANOPY RETENTION EASEMENT SHALL NOT BE REMOVED UNLESS DISEASED OR DEAD UNLESS AUTHORIZED FOR REMOVAL BY ALACHUA COUNTY PER CHAPTER 406, ARTICLE II. PERMITS FROM THE COUNTY ARE REQUIRED FOR REMOVAL OF REGULATED TREES PER ALACHUA COUNTY ULDC.

PREPARED BY:



11508 SW Archer Road
Gainesville, Florida 32608
Ph. 352-373-8220

PREPARED FOR:

BRUCE SHERMAN

ALACHUA COUNTY, FL

PROJECT:

SOL ACRES
RURAL
SUBDIVISION

SHEET TITLE:

LANDSCAPE
CALCULATIONS
& NOTES

PROJECT PHASE:

DEVELOPMENT
REVIEW

ISSUE DATE:

NOVEMBER 20, 2023

REVISIONS		
NO.	DATE	COMMENTS

PROFESSIONAL SEAL:

NOT FOR
CONSTRUCTION

THIS DOCUMENT IS ISSUED FOR THE PURPOSE OF REVIEW ONLY AND NOT FOR BIDDING OR CONSTRUCTION PURPOSES.

LAWRENCE E. TEAGUE
FLORIDA: LA0001582

PROJECT NUMBER:

23017.1

DRAWN BY:

ALZ

CHECKED BY:

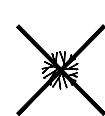



LET

SHEET NUMBER:

L1.1



TREE LEGEND

-  EXISTING TREE TO BE REMOVED
-  EXISTING TREE TO REMAIN
-  EXISTING HERITAGE TREE TO REMAIN
-  EXISTING TREE OUTSIDE PROPERTY BOUNDARY

TREE ABBREVIATIONS

- CH = CHERRY LAUREL
- LV = LIVE OAK
- PI = PINE
- SG = SWEETGUM
- SYC = SYCAMORE
- WO = WATER OAK

PREPARED BY:



11508 SW Archer Road
Gainesville, Florida 32608
Ph. 352-373-8220

PREPARED FOR:

BRUCE SHERMAN

ALACHUA COUNTY, FL

PROJECT:

**SOL ACRES
RURAL
SUBDIVISION**

SHEET TITLE:

**TREE
MITIGATION
SHEET**

PROJECT PHASE:

**DEVELOPMENT
REVIEW**

ISSUE DATE:

NOVEMBER 20, 2023

REVISIONS		
NO.	DATE	COMMENTS

PROFESSIONAL SEAL:

**NOT FOR
CONSTRUCTION**

THIS DOCUMENT IS ISSUED FOR THE PURPOSE OF REVIEW ONLY AND NOT FOR BIDDING OR CONSTRUCTION PURPOSES.

LAWRENCE E. TEAGUE
FLORIDA: LA0001582

PROJECT NUMBER:

23017.1

DRAWN BY:

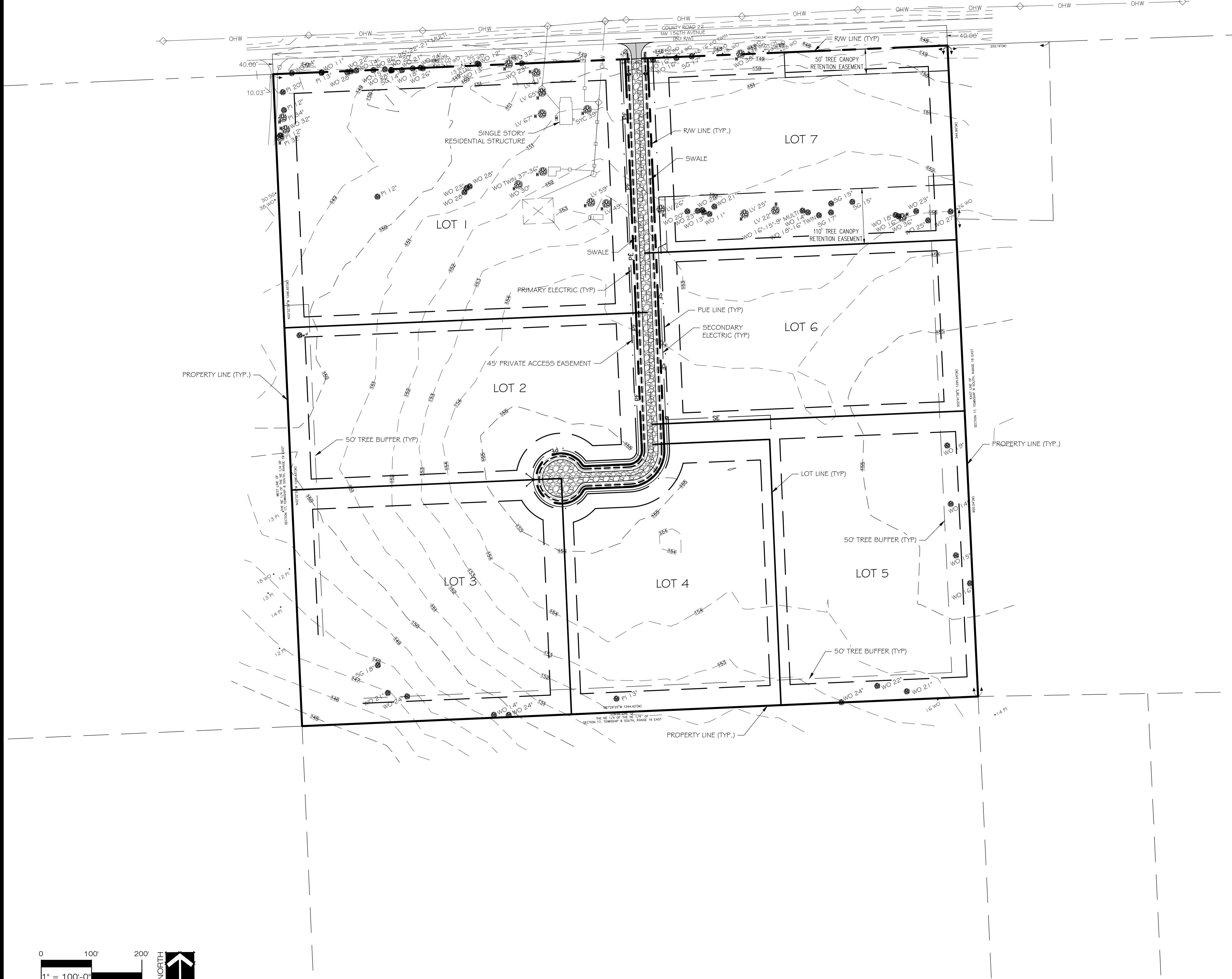
ALZ

CHECKED BY:

LET

SHEET NUMBER:

L1.2



LEGEND

- EXISTING TREE TO REMAIN
- EXISTING HERITAGE TREE TO REMAIN
- EXISTING TREE OUTSIDE PROPERTY BOUNDARY
- PROPOSED STABILIZED LIMEROCK (SEE ENGINEERING PLANS)
- PROPOSED ASPHALT PAVEMENT (SEE ENGINEERING PLANS)

TREE ABBREVIATIONS

- CH = CHERRY LAUREL
- LV = LIVE OAK
- PI = PINE
- SG = SWEETGUM
- SYC= SYCAMORE
- WO = WATER OAK

PREPARED BY:



ZAMIA
DESIGN
LANDSCAPE ARCHITECTURE

11508 SW Archer Road
Gainesville, Florida 32608
Ph. 352-373-8220

PREPARED FOR:

BRUCE SHERMAN

ALACHUA COUNTY, FL

PROJECT:

SOL ACRES
RURAL
SUBDIVISION

SHEET TITLE:

LANDSCAPE
PLAN SHEET

PROJECT PHASE:

DEVELOPMENT
REVIEW

ISSUE DATE:

NOVEMBER 20, 2023

REVISIONS		
NO.	DATE	COMMENTS

PROFESSIONAL SEAL:

NOT FOR
CONSTRUCTION

THIS DOCUMENT IS ISSUED
FOR THE PURPOSE OF REVIEW
ONLY AND NOT FOR BIDDING
OR CONSTRUCTION PURPOSES.

LAWRENCE E. TEAGUE
FLORIDA: LA0001582

PROJECT NUMBER:

23017.1

DRAWN BY:

ALZ

CHECKED BY:

LET

SHEET NUMBER:

L2.1