



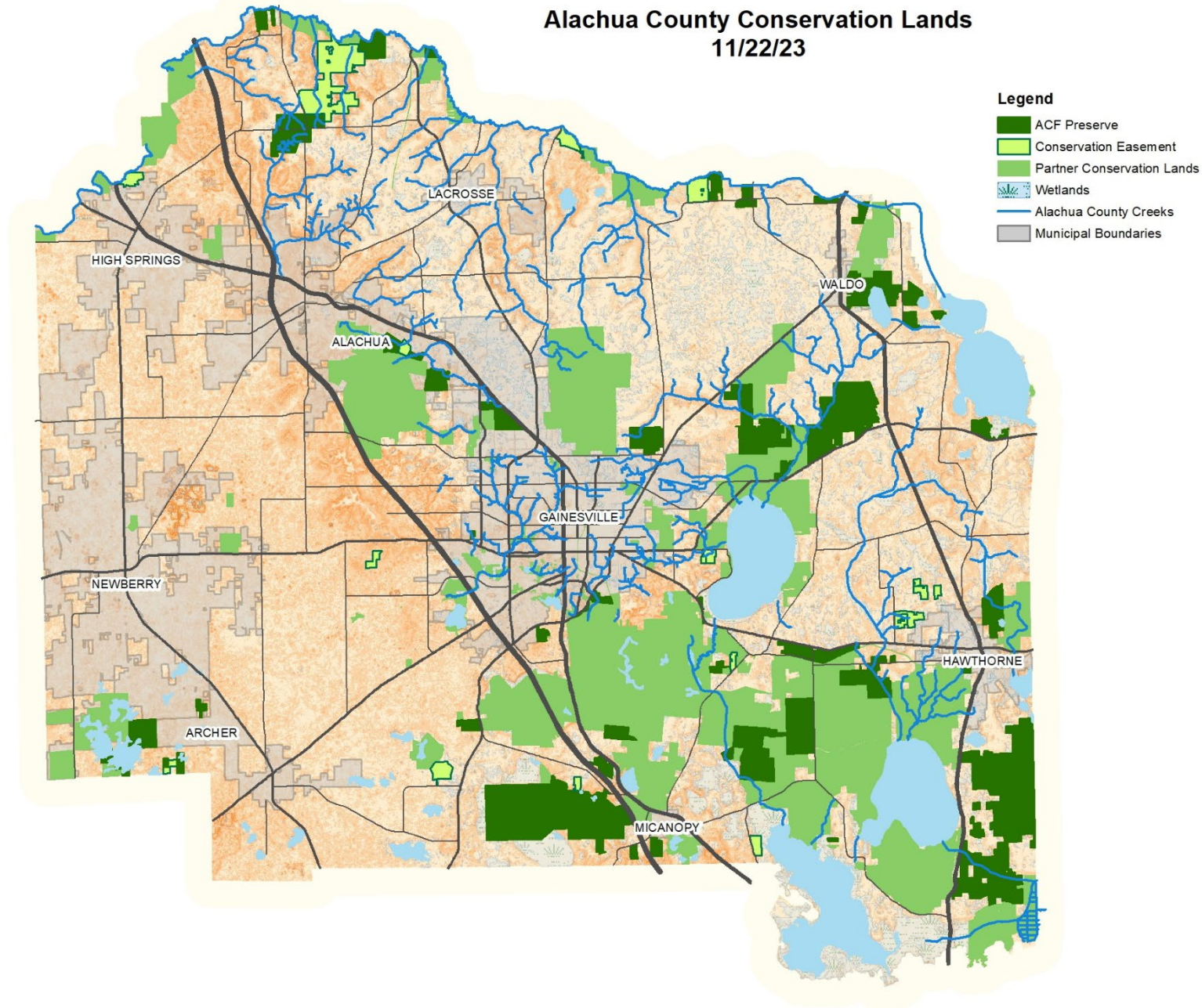
ALACHUA COUNTY FOREVER HUNTING BUSINESS PLAN UPDATE

**BOCC Special Policy Meeting
12/5/2023**

**Andi Christman
Land Conservation Program Manager**

Alachua County Conservation Lands

11/22/23



Adopted by BOCC on January 22, 2013

Purpose:

- Articulate principles that guide recreational hunting on Alachua County Forever (ACF)-managed lands
- Identify issues for consideration by the Alachua County Board of County Commissioners (BoCC)
- Recommend sound business practices and policies for adoption by the BoCC that will then guide hunting on these lands



ALACHUA COUNTY HUNTING BUSINESS PLAN



Adopted January 22, 2013

Recreational Hunting Principles on ACF Managed Lands

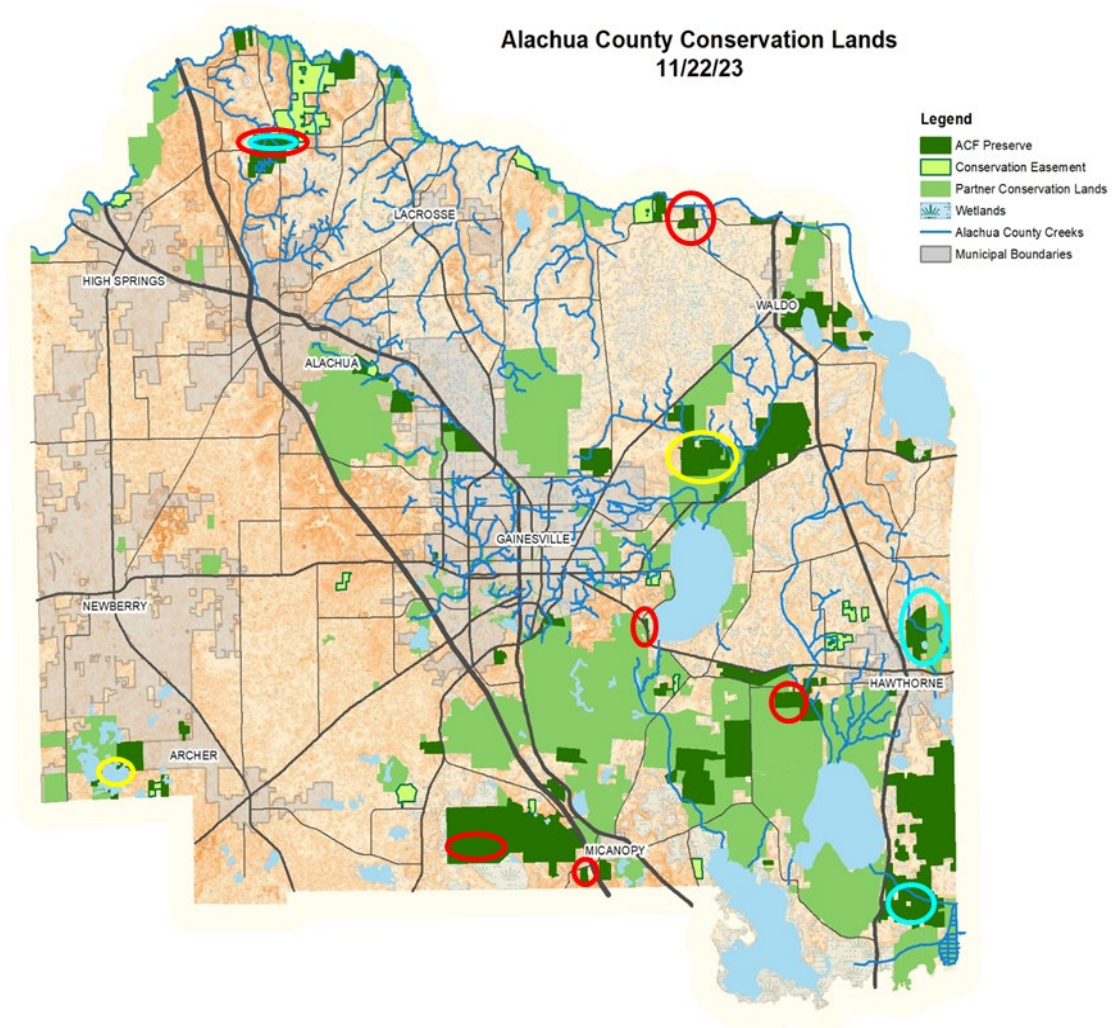
1. The Board of County Commissioners recognizes that well-managed nature preserves contribute to the community's quality of life by protecting and enhancing water resources, wildlife habitats, and providing natural areas suitable for resource-based recreation.
2. The Board of County Commissioners recognizes that hunting is an important recreational activity.
3. The Board of County Commissioners recognizes that hunting can be a valuable tool to manage wildlife populations and directs that hunting be permitted where and when consistent with the State of Florida hunting regulations, the goals of the ACF Referendum and the preserve management plans.
4. The Board of County Commissioners recognizes that over-hunting game results in a decrease in a valuable part of the natural ecosystem and is not consistent with ACF and Wild Spaces & Public Places referenda. Therefore recreational hunting should only be implemented in a sustainable manner that furthers the goals of the ACF Referendum and the preserve management plans.
5. The Board of County Commissioners recognizes that hunting, as with other forms of recreation on County lands, will increase the potential for injury to users and neighbors and for damage to County and adjacent infrastructure. The Board therefore recognizes and accepts an increase in the County's liability for claims arising from their ownership of these properties opened to hunting.

Recreational Hunting Principles cont'

6. The Board of County Commissioners, after carefully considering the risk and impact to the non-hunting public, directs staff not to offer County-managed hunting opportunities on any site after it has been opened to the general public for non-hunting recreation, and not to delay opening sites for the public in order to facilitate recreational hunting exclusively.
7. The Board of County Commissioners recognizes that hunting rights are a commodity, with economic value subject to market forces. The Board also recognizes that, while it may be possible to license these opportunities to the highest bidder, the Board has a higher interest in making these opportunities available to a diverse and broad constituency. Further the Board recognizes that offsetting County property management expenses through competitively-awarded public-private partnerships can be a valuable substitute for cash proceeds.
8. The Board of County Commissioners recognizes that leveraging stewardship partnerships with other entities enables the County to accomplish more of its goals without increasing its expenditures. The Board directs staff to ensure that the provision of hunting opportunities should not jeopardize these partnerships and their cost savings to the County.
9. The Board of County Commissioners recognizes that allowing recreational hunting on ACF preserves will result in an increased workload for the Environmental Protection Department and supporting County staff. These include additional costs in administering the procedures and processes, additional maintenance costs, and increased liability to the County taxpayer. Any revenue collected for hunting can only be expected to offset a portion of the total operating cost to manage these public lands.
10. The Board of County Commissioners recognizes it is beneficial for the County to re-invest any hunting revenues in the stewardship of the ACF portfolio of preserves and directs that these funds supplement existing core stewardship funding.

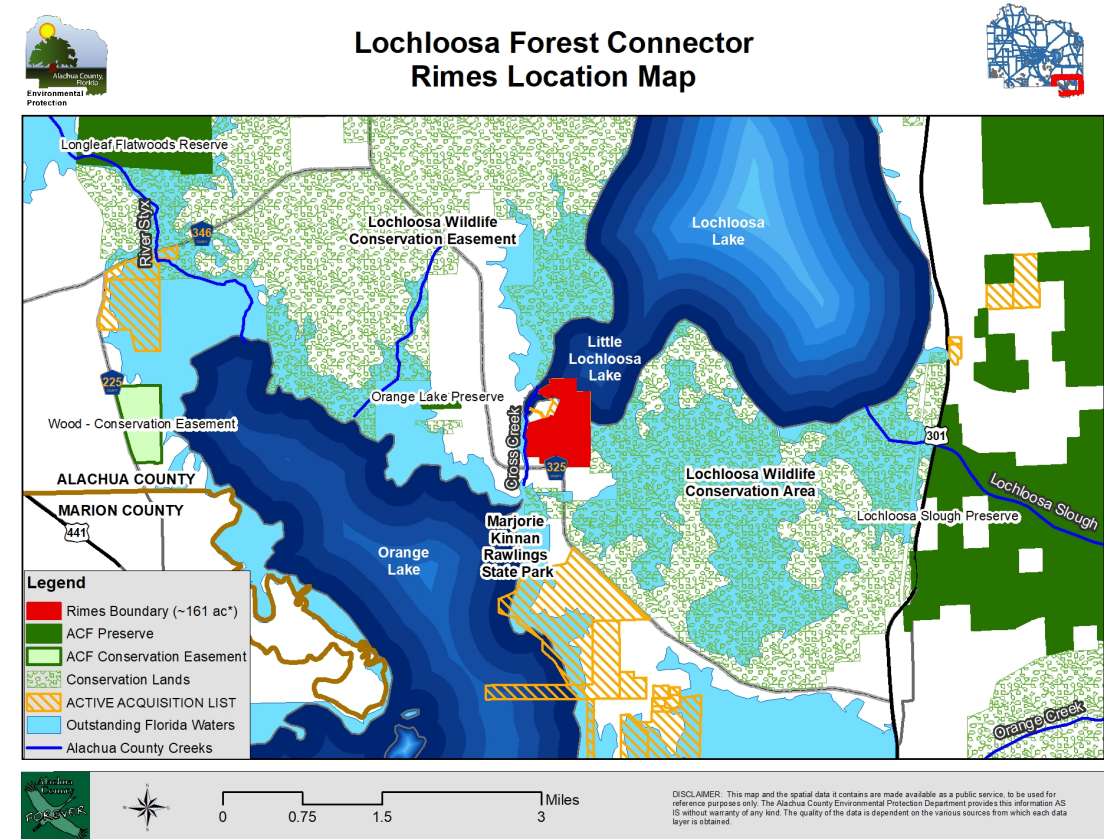
Recreational Hunting Modes on County-Owned Lands

1. Management by FWC either as part of a Wildlife Management Area, or a Public Small Game Hunt Area
 - **2 Properties** (Watermelon Pond WEA Gladman Tract and Newnan's Lake Conservation Area Hatchet Creek Tract)
2. Multi-Year Hunting License Agreements, managed by Alachua County, with private individuals or a private group
 - **6 Properties** (Tusawilla Headwaters Preserve, Phifer Flatwoods Preserve – Additions Tract, Mill Creek Preserve -North Tracts, Barr Hammock Preserve – West, Northeast Flatwoods Preserve, Pithlachocco Preserve)
3. Limited-Hunt License Agreements, managed by Alachua County, with private individuals or a private group
 - **3 properties** (National Wild Turkey Federation Women's and Youth Special opportunity hunts at Mill Creek – North, Lochloosa Slough-South and Little Orange Creek Preserves)
4. No Hunting.



Some Recent Hunting-related Discussions

- Consideration of entering into Wildlife Management Area Agreements with FWC on recently acquired properties
 - Lochloosa Slough Preserve
- Joint acquisition of properties with partner agencies, where management by partner may include hunting.
 - Lochloosa Connector – Rimes property



* Rimes acres total ~230 ac including sovereign submerged lands

RISK & RISK MITIGATION STRATEGIES

Looking Forward

- Review of process to bring new hunting considerations forward:
 - Business Plan update
 - Individual property agreements
 - Preferences on types of risk considerations to include