



# **Alachua County Parks and Open Space**

**Masterplan Project Priority  
Update**

**Jason Maurer  
Parks and Open Space  
Director**

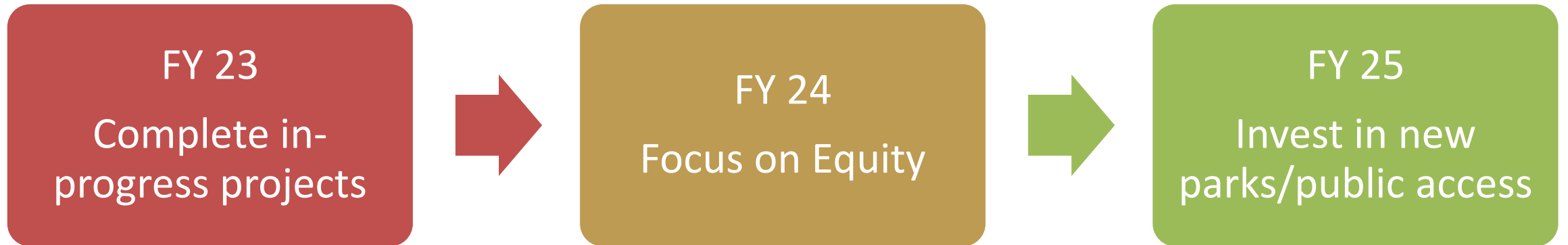




**March 23 – ROSCO reviewed preliminary  
Masterplan priority list**

**May 11 - ROSCO unanimous vote to approve  
priority list**

# Methodology



# **FY 23 - WSPP Funded Projects**



**Veterans Memorial Park – “Boundless” playground and additional parking**

**Marjorie Kinnan Rawlings/Kate Barnes Boat Ramp – Improvements underway including replacement of boat docks**

# **FY 24 - WSPP Funded Projects**



- **Copeland Park - amenities and Playground upgrades**
- **Monteocha Park - amenities and Playground upgrades**
- **Poe Springs Park – replace restroom and dock at boat ramp**

## **FY 25 - WSPP Funded Projects**



- **Squirrel Ridge Park - add restroom**
- **Develop active park amenities**
  - St. Peter/St. Paul (lease)
  - GRU Wetlands (lease)
  - Industrial Park (County-owned)
  - McCall (County-owned)
  - JB Walker (County-owned)





#### PROVIDE FOR TODAY AND PLAN FOR TOMORROW

- Parks provide for the needs of current users and respond to future trends.
- To achieve equity, Parks throughout the county are of a consistent quality and meet basic standards.
  - Assets offered respond to the needs of surrounding park users achieved through a community engagement process.
  - Assets planned for future parks respond to trends and forecasting.



#### PROXIMITY AND ACCESS

- All residents have access to opportunities for play and recreation.
- Each resident lives within a close range of either a neighborhood park (1-mile urban or 2-miles rural) or a community park (3-miles urban or 5-miles rural).
  - A robust network of trails and pathways connect users with park amenities.
  - Parks provide amenities to facilitate multi-modal access.



#### INCLUSIVITY AND SAFETY

- Parks are safe and welcoming to multicultural users of all ages and abilities.
- Each park provides facilities usable by people of all ages and abilities.
  - Each park promotes safe and inclusive spaces for all users.



#### NATURAL ALACHUA

- Alachua County residents have access to nature-based recreation.
- Residents have access to nature trails and water-based activities.
  - Parks leverage natural assets for environmental education and interpretation.



#### COMMUNICATION

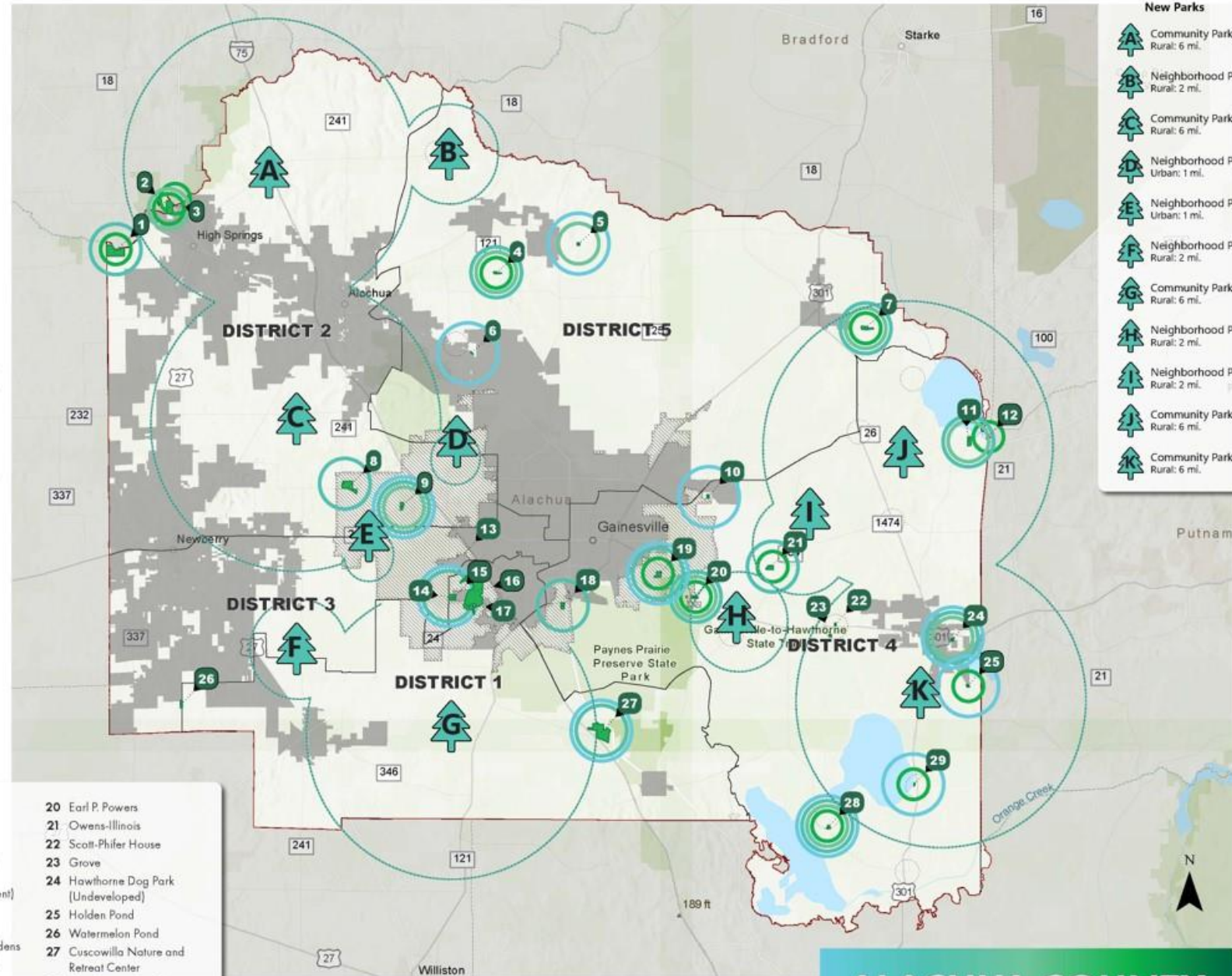
- Park users are aware of park and programming offerings.
- Residents can easily find and share information about available amenities and upcoming events.
  - Partnership between departments and agencies allow for efficient and expanded park programming opportunities.

#### Park Legend

- Poe Springs
- McCall (Undeveloped)
- High Springs Boat Ramp
- Cellan Oak
- Monteocha
- DeSoto Park
- Lake Alto
- Rotary Park at Jonesville
- Jane B Walker Park (Undeveloped)
- Copeland
- Santa Fe Lake

- Melrose Boat Ramp
- Mark S. Hopkins Park
- Veterans Memorial Park (2 Lighted Soccer Fields)
- Veterans Memorial Park (Gainesville Use Agreement)
- Kanapaha Lake (Undeveloped)
- Kanapaha Botanical Gardens
- Squirrel Ridge (Dog Park)
- Cynthia Moore Chestnut Park and Clark Butler Nature Preserve

- Earl P. Powers
- Owens-Illinois
- Scott-Phifer House
- Grove
- Hawthorne Dog Park (Undeveloped)
- Holden Pond
- Watermelon Pond
- Cuscowilla Nature and Retreat Center
- Kate Barnes Boat Ramp at Marjorie Kinnan Rawlings Park
- Lochloosa



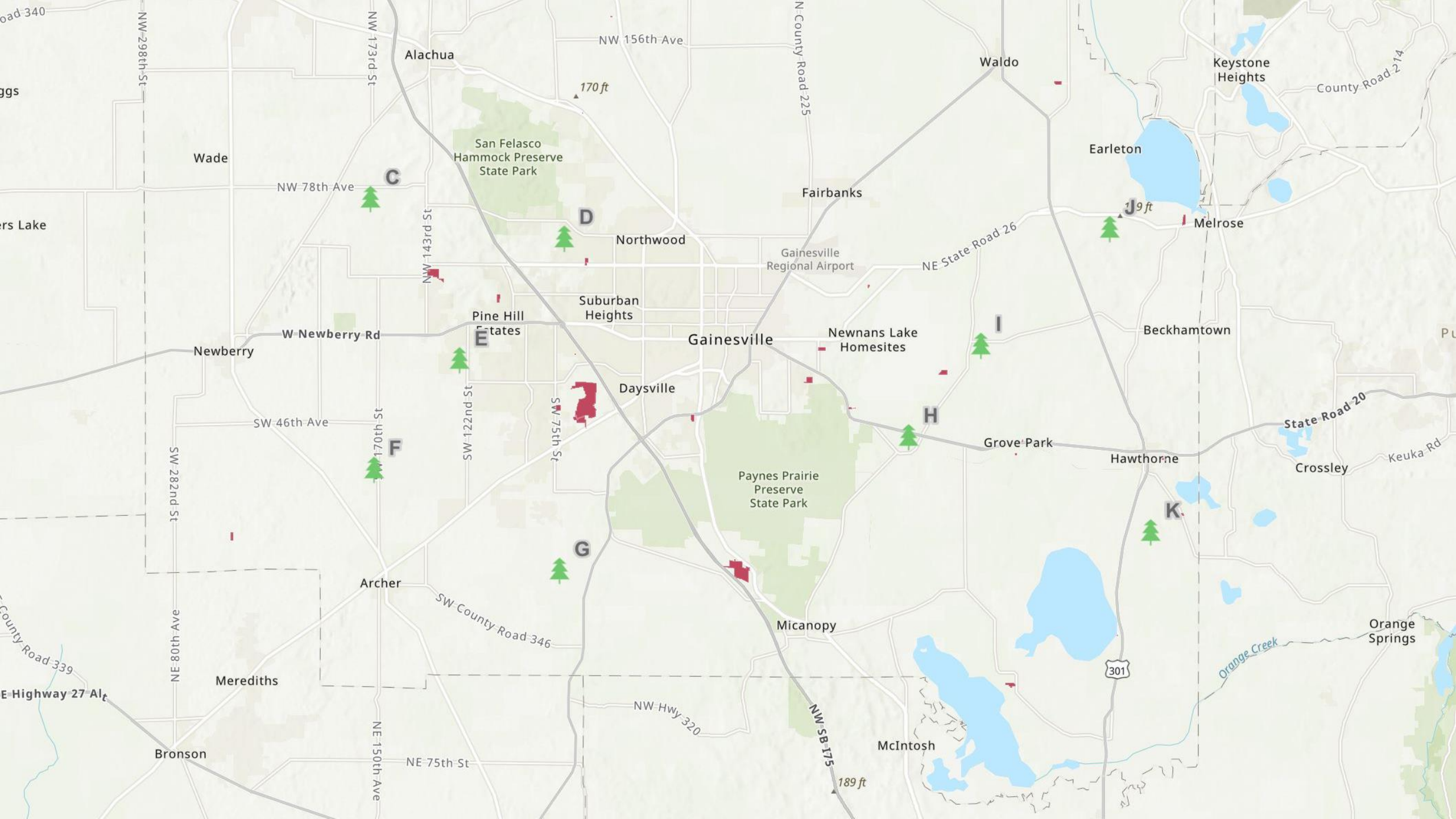
#### New Parks

- A** Community Park Rural: 6 mi.
- B** Neighborhood Park Rural: 2 mi.
- C** Community Park Rural: 6 mi.
- D** Neighborhood Park Urban: 1 mi.
- E** Neighborhood Park Urban: 1 mi.
- F** Neighborhood Park Rural: 2 mi.
- G** Community Park Rural: 6 mi.
- H** Neighborhood Park Rural: 2 mi.
- I** Neighborhood Park Rural: 2 mi.
- J** Community Park Rural: 6 mi.
- K** Community Park Rural: 6 mi.

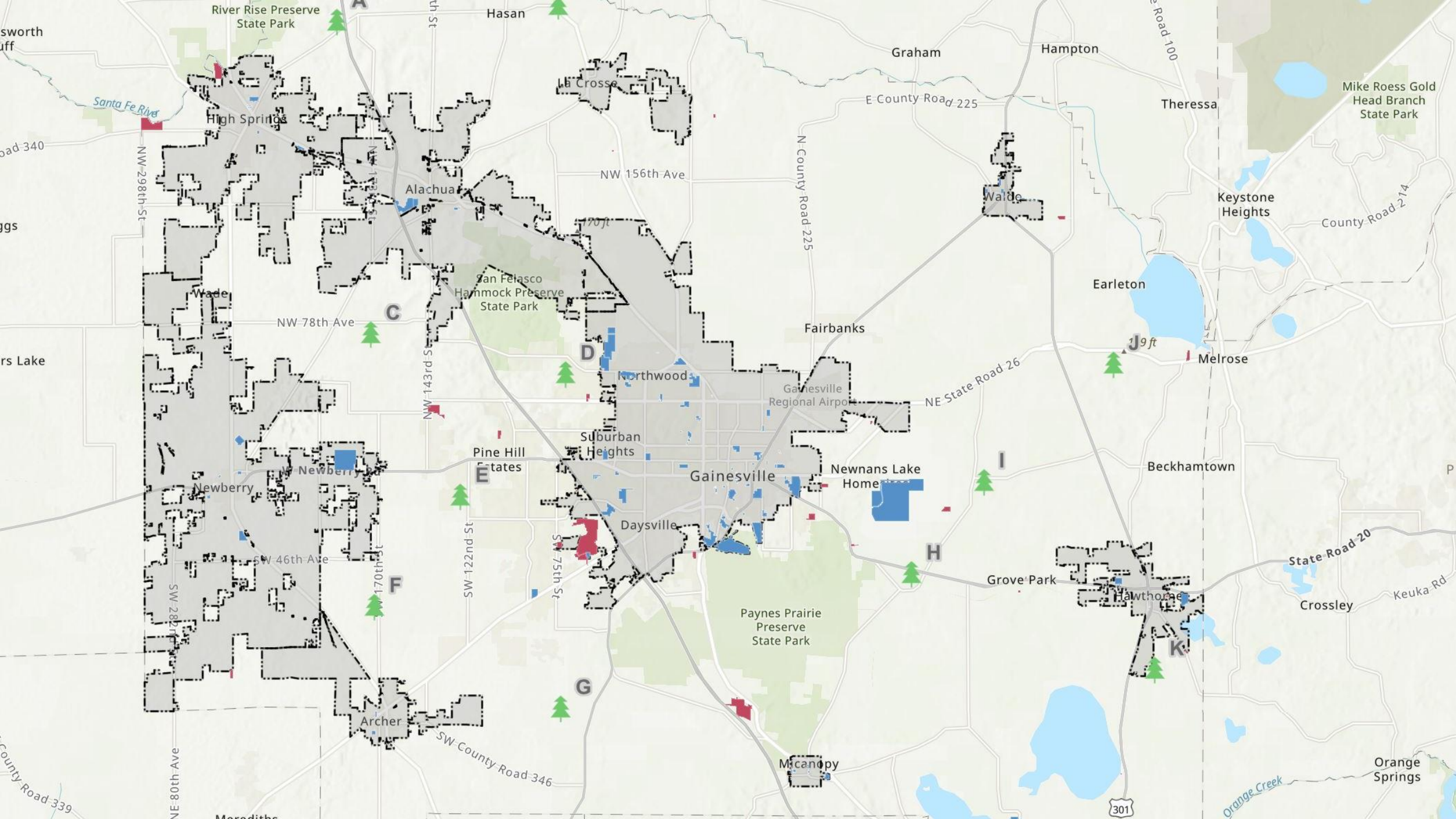
## ALACHUA COUNTY PARKS & OPEN SPACE VISION



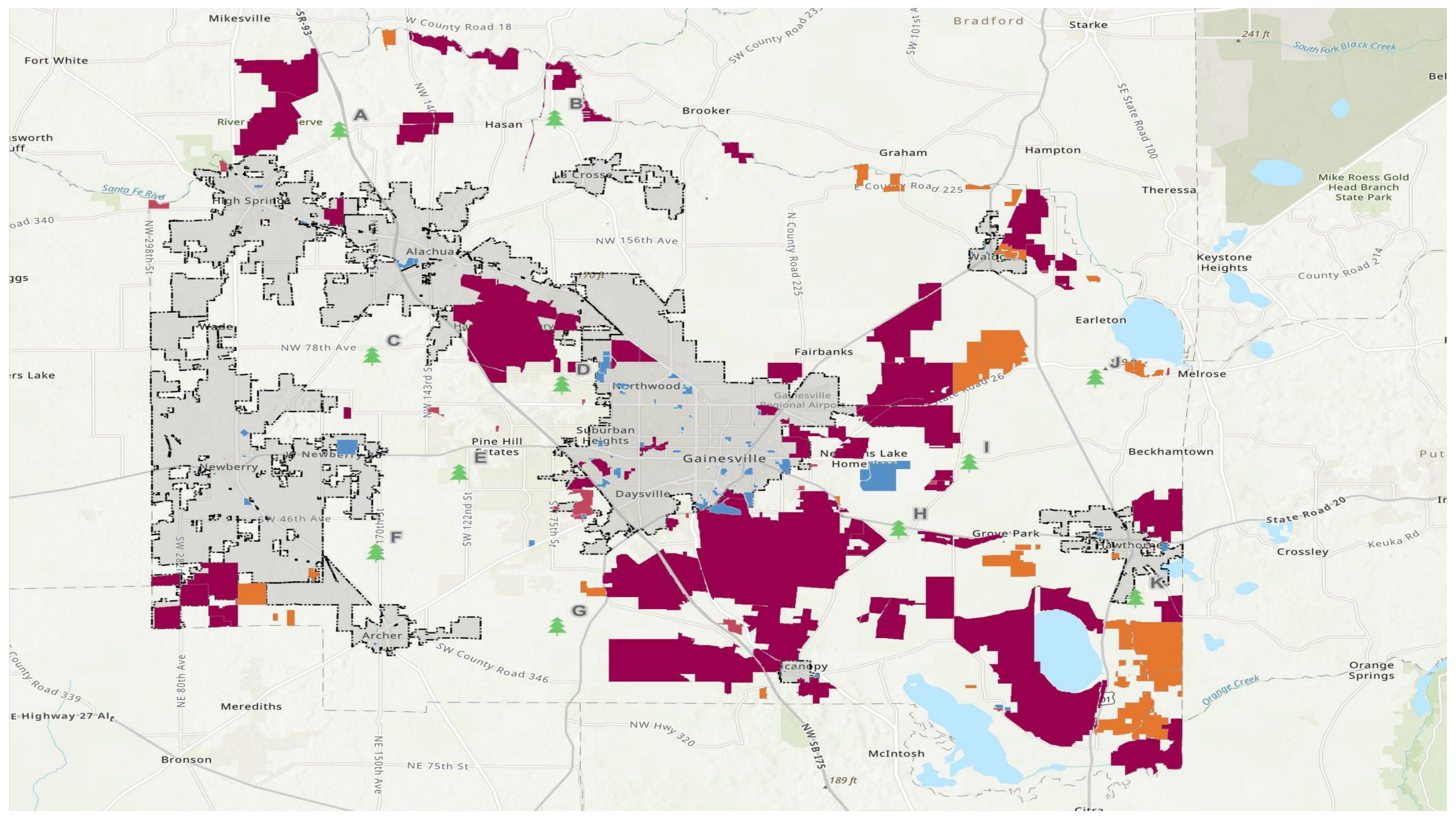




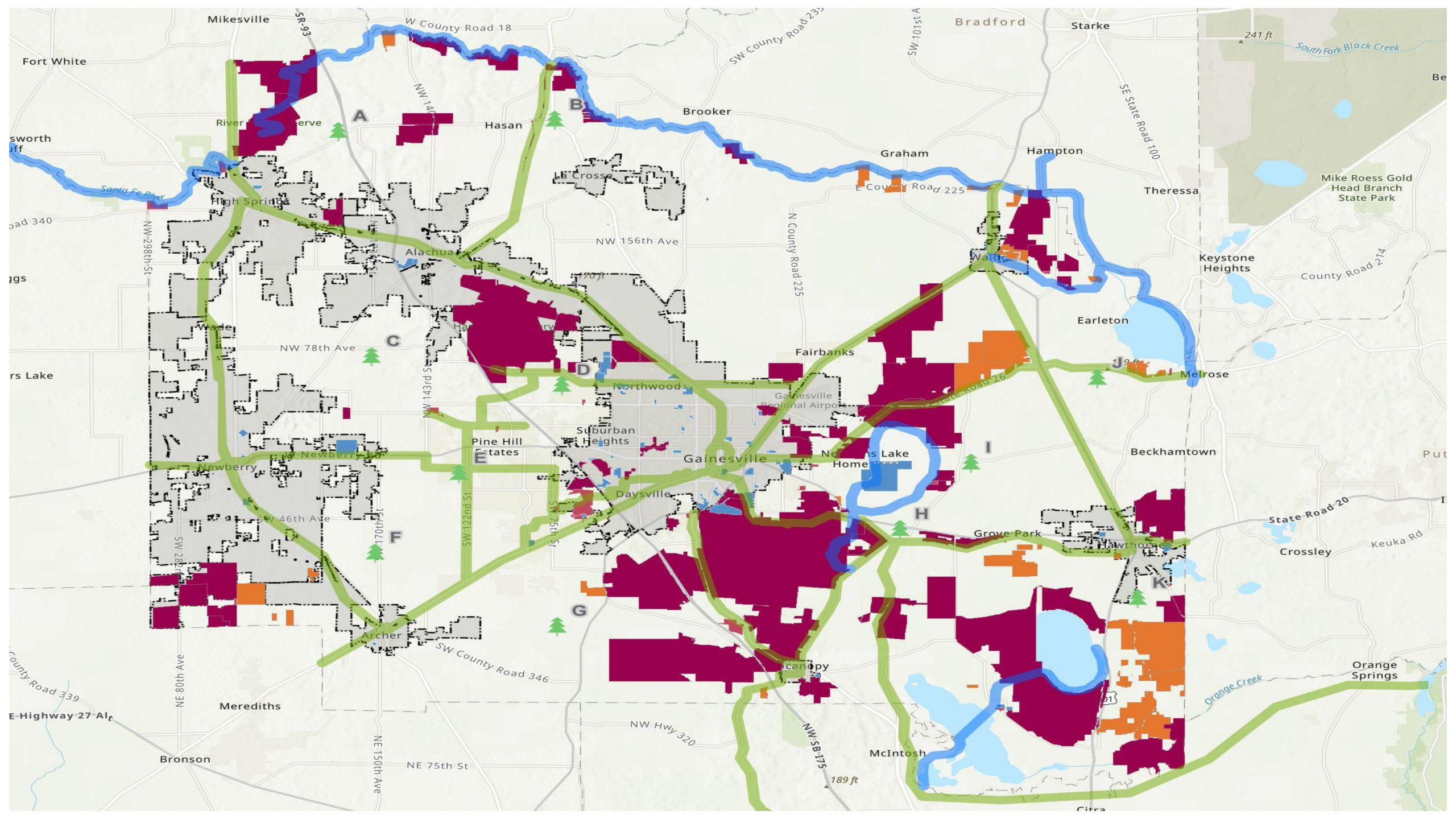












# Questions?

