

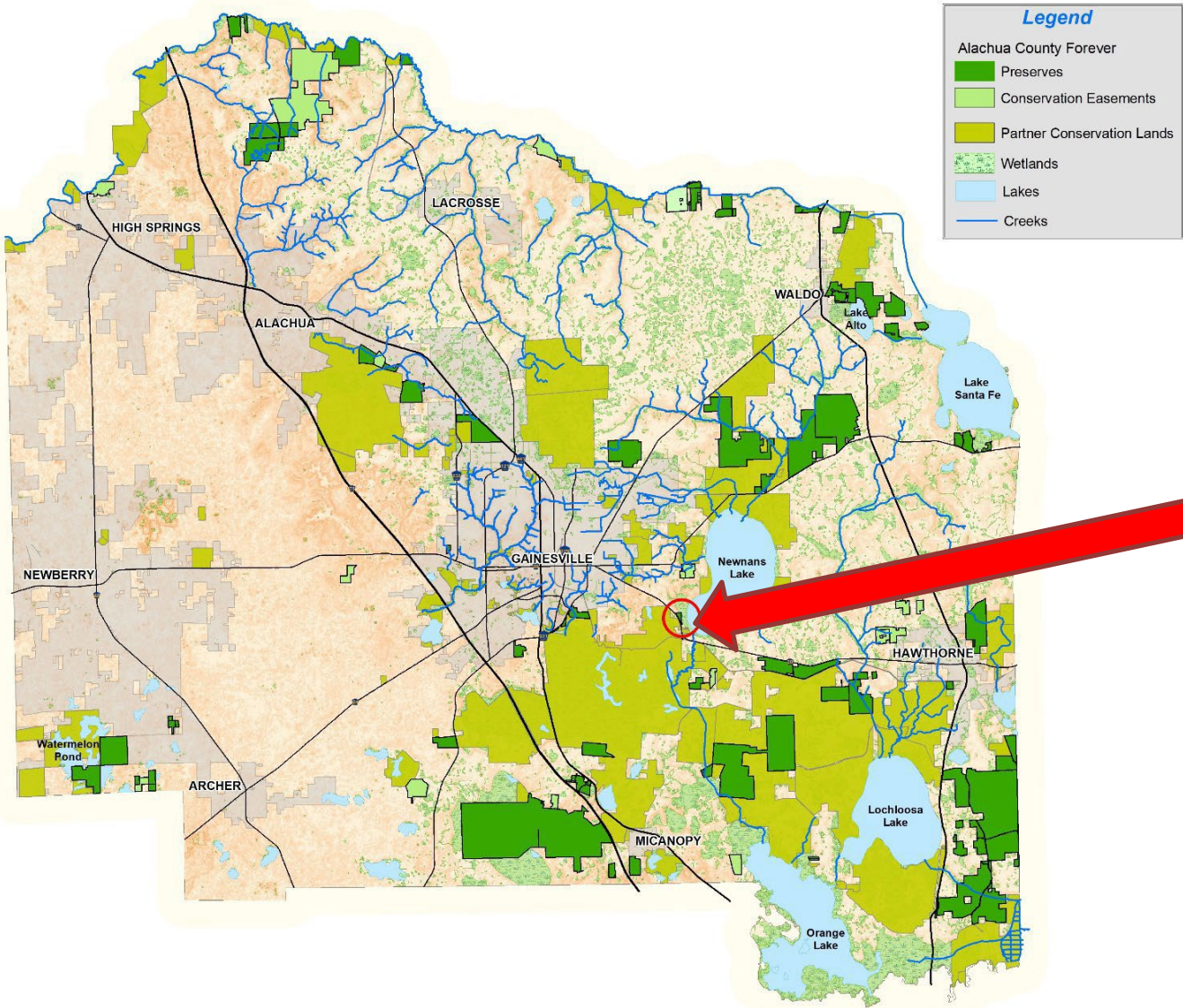


# Pithlachocco Preserve

## Management Plan highlights



# Alachua County Conservation Lands



**Pithlachocco  
Preserve:  
27.14 acres**

# The ACF Preserve Management Plan Process



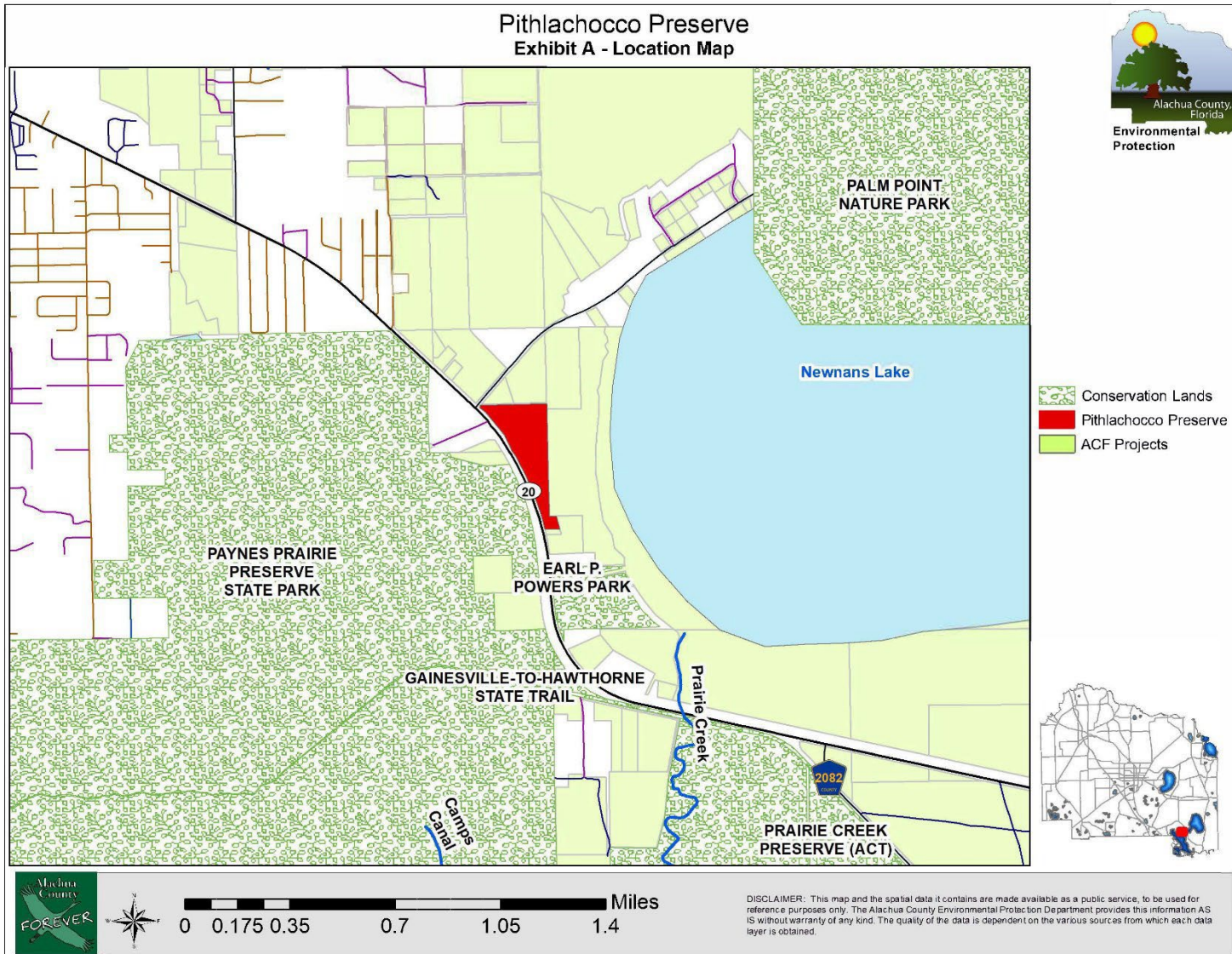
- **10-Year initial plan length**
- **Similar to management plan process for state-owned lands**
- **Identifies Resources onsite and Management Goals**
  - New Plans for new preserves
  - Plan Updates/Amendments for additions to existing preserves

# Preserve Acquisition History



| Acquisition Date  | Parcel Number               | Acres  | Cost      | Funding Source  |
|-------------------|-----------------------------|--------|-----------|---|
| March 29, 2007    | 16201-003-000<br>(Wainberg) | 24.51  | \$175,000 | 57% Housing and Urban Development Grant/43% Alachua County Forever (ACF) Bond |
| February 11, 2013 | 16200-002-001<br>(Lewis)    | 1.3057 | \$14,400  | 2008 Wild Spaces Public Places Surtax   |
| April 28, 2014    | 18002-000-000<br>(Floyd)    | 1.328  | \$15,600  | 2008 Wild Spaces Public Places Surtax   |

# Preserve Location:



- In SE Alachua County along Newnans Lake.
- Road frontage is along SR 20
- Eastern boundary abuts sovereign submerged lands owned by the State of Florida

# Preserve Natural Features:



Pithlachocco Preserve  
Exhibit E - Natural Communities Map



0 330 660 1,320 Feet

DISCLAIMER: This map and the spatial data it contains are made available as a public service, to be used for reference purposes only. The Alachua County Environmental Protection Department provides this information AS IS without warranty of any kind. The quality of the data is dependent on the various sources from which each data layer is obtained.

- Four natural communities
- Connection to cypress swamp surrounding Newnans Lake.
- Surrounding conservation lands network.
- Contributes to important wading bird habitat.
- Area of significant Native American cultural history



# Key Management Strategies



- Continue solid waste removal as item(s) are discovered
- Monitor and remove invasive plants and animals as needed
- Protect cultural sites from disturbance and coordinate with State Division of Historical Resources regarding site protection.
- Monitor the preserve through field inspections and photo points to determine relative success of management strategies
- Currently no public use due to preserve size and site sensitivity.
- A five-year hunting caretaker license agreement is in place, expires in January 2025.
- Currently open by appointment only



# Restoration Activities: Primarily Invasive Plant Removal



# Staff Recommendation



- Request BOCC Approval of the Pithlachocco Preserve 10 Year Management Plan

