



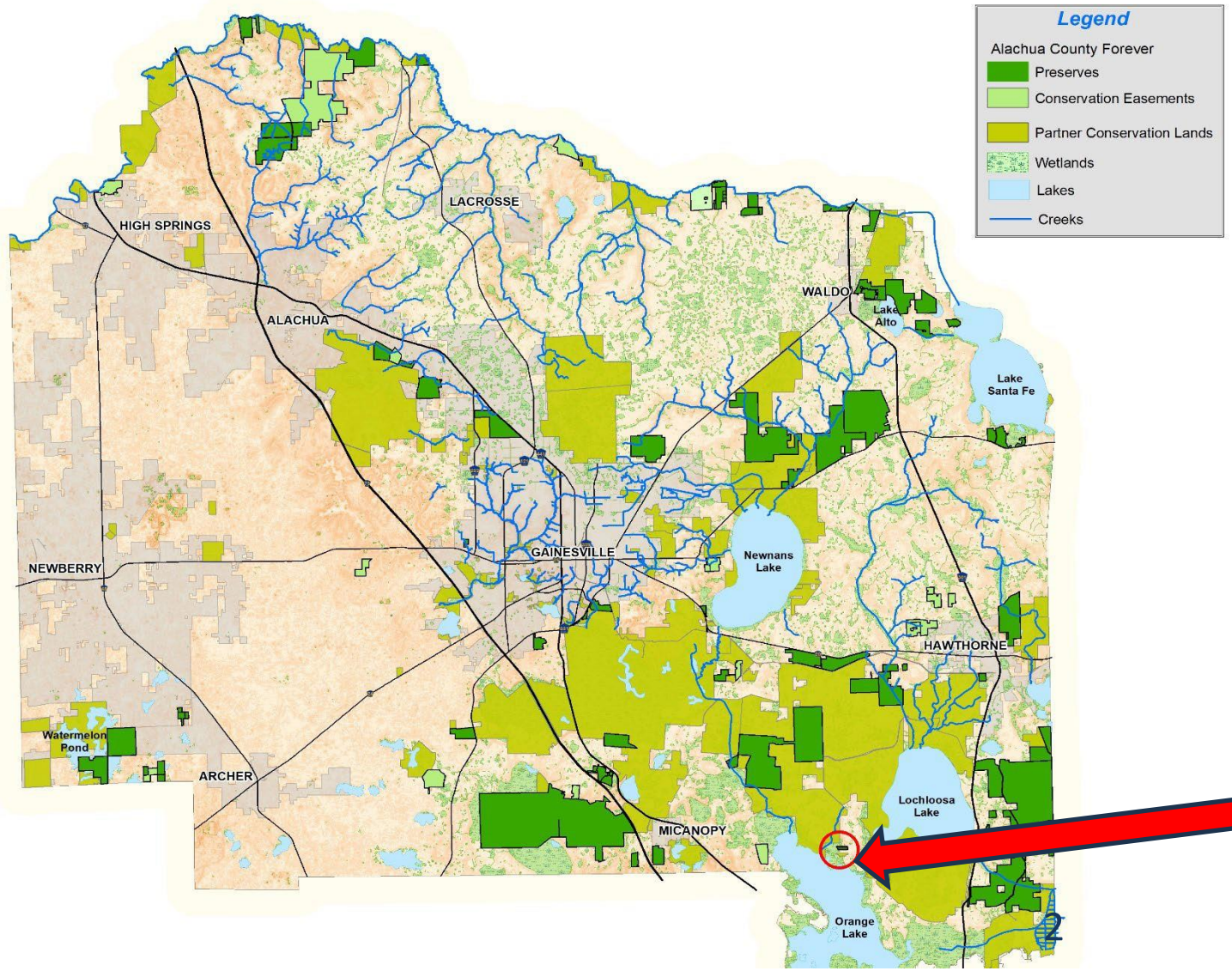
# Orange Lake Preserve

## Management Plan highlights





# Alachua County Conservation Lands



**Orange Lake  
Preserve: 29.17  
acres**

# The ACF Preserve Management Plan Process



- **10-Year initial plan length**
- **Similar to management plan process for state-owned lands**
- **Identifies Resources onsite and Management Goals**
  - New Plans for new preserves
  - Plan Updates/Amendments for additions to existing preserves

# Preserve Acquisition History

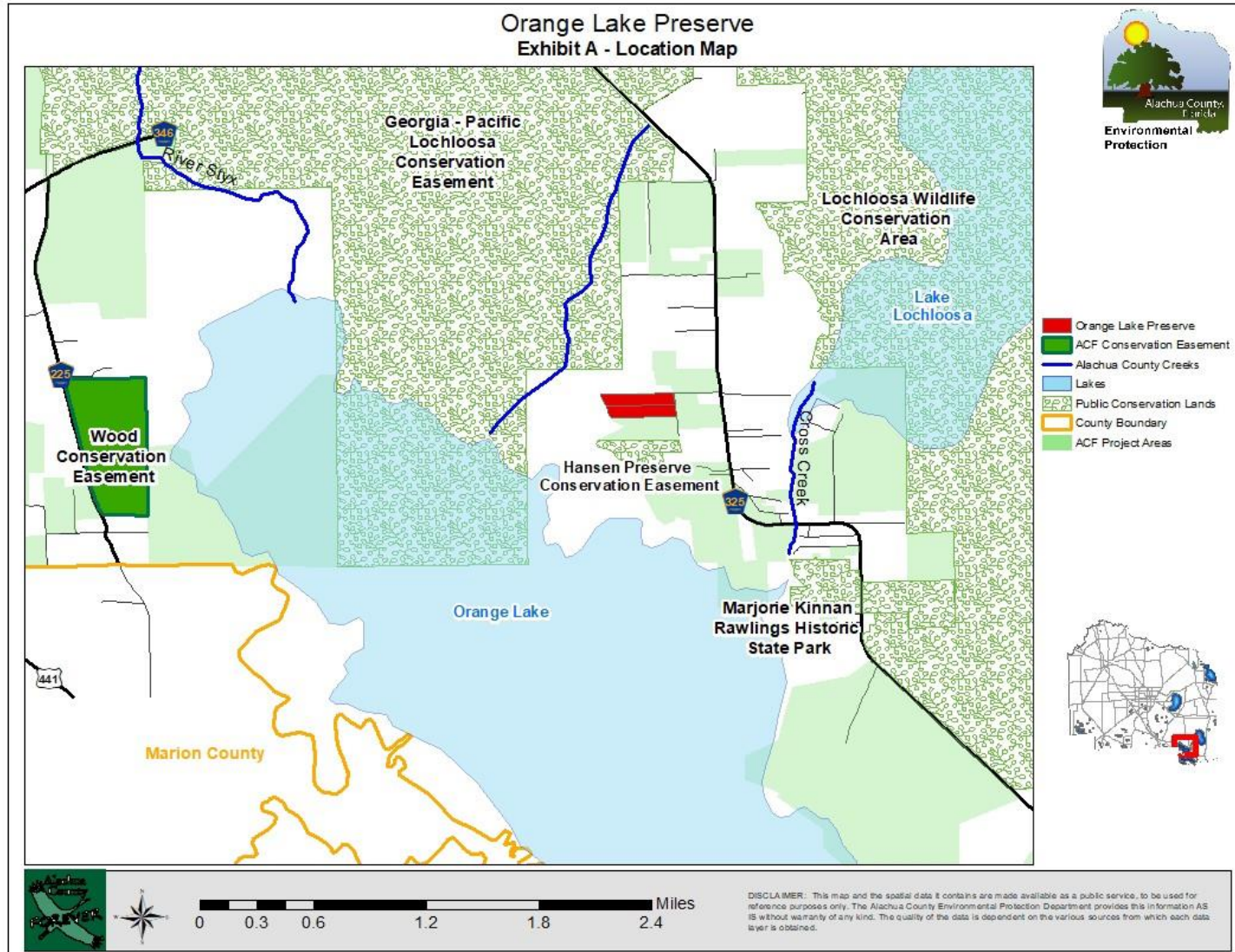


Orange Lake Preserve was acquired through two generous donations (29.17 acres total):

- December 20, 2019; Parcel 18354-037-001 (Smith), 14.98 acres
- May 22, 2020; Parcel 18354-037-007(Stephens), 14.19 acres



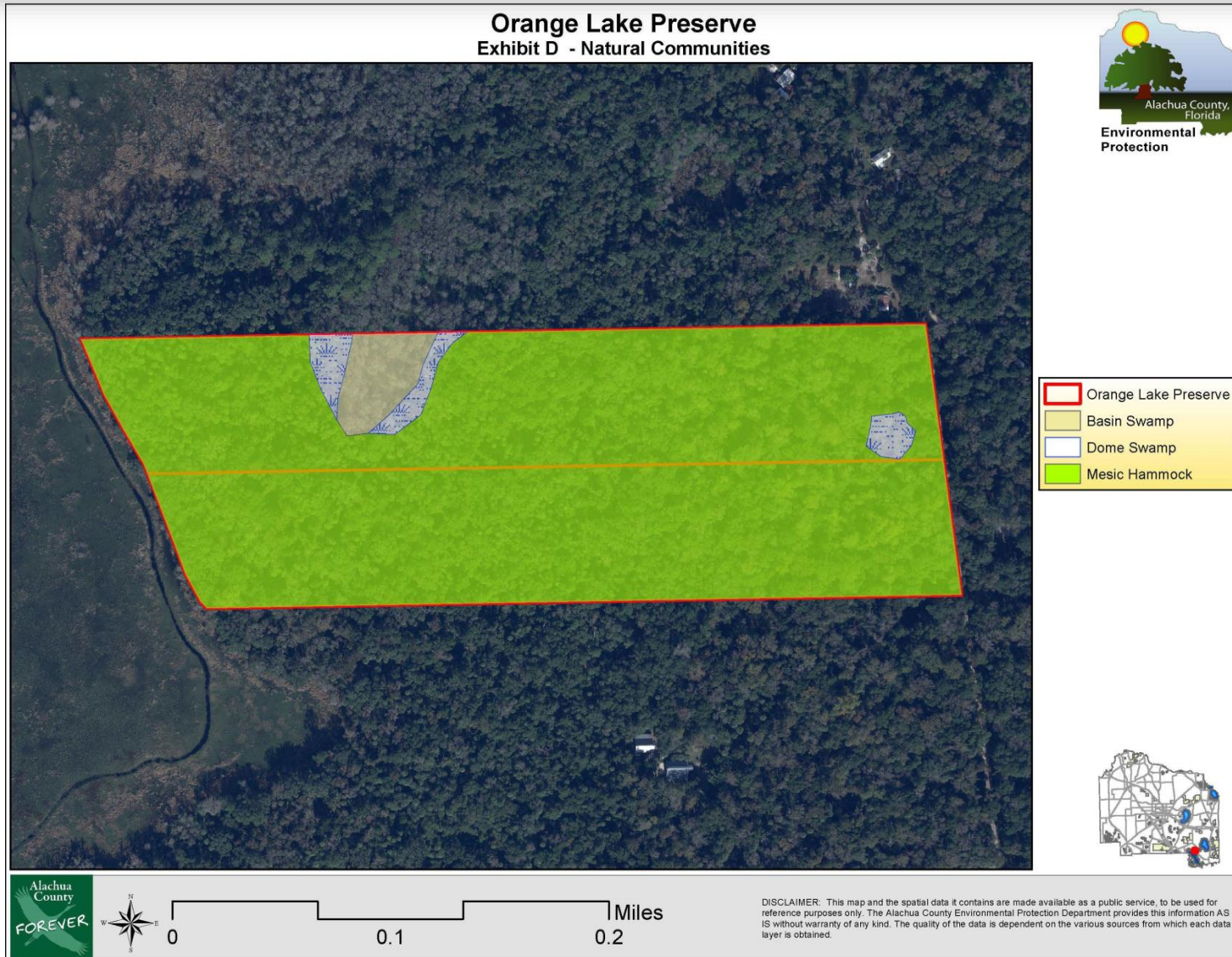
# Preserve Location:



- South Central Alachua County, in Cross Creek.
- Road frontage is along a private road.
- Western boundary abuts the Outstanding Florida Waters of Orange Lake.



# Preserve Natural Features:



- Three natural communities
- Protects marsh edge surrounding Orange Lake.
- Contributes to important wading bird habitat.







# Key Management Strategies



- Solid waste removal as item(s) are discovered
- Monitoring and treating invasive/exotic plants
- Monitor and arrange for removal of feral animals as needed
- Protect cultural sites from disturbance and coordinate with Florida Department of State, Division of Historical Resources regarding identification and protection of cultural sites
- Monitor the preserve through field inspections and photo points to determine relative success of management strategies



# Restoration Activities: Primarily Invasive Plant Removal

Photo by James H. Miller  
USDA Forest Service





# Staff Recommendation



- Request BOCC Approval of the Orange Lake Preserve 10 Year Management Plan

