

811 KNOW WHAT'S BELOW
ALWAYS CALL 811 BEFORE YOU DIG
It's fast, it's free, it's the law.
Call 811 two business days before digging

INITIAL CANOPY LOSS (ULDC 406.12 (a) 3)

1. TOTAL CANOPY AREA OF EXISTING TREES	2.63 ACRES
2. TOTAL CANOPY AREA TO BE REMOVED	2.05 ACRES
3. TOTAL CANOPY AREA TO REMAIN	0.58 ACRES
4. PERCENTAGE OF EXISTING CANOPY TO REMAIN	22.0%

PAVED GROUND SURFACE AREA CANOPY COVERAGE (ULDC 407.43.1 (c))

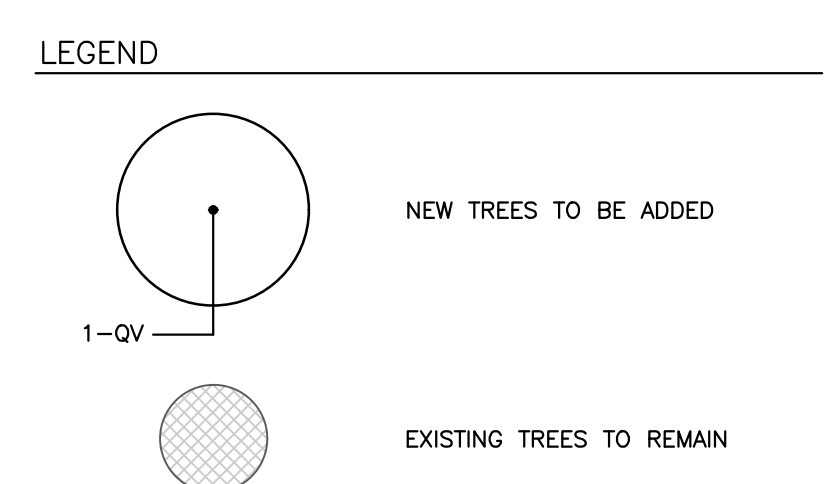
COMMON NAME	SPR. @ 20 YRS.	CANOPY AREA	QUANTITY	TOTAL AREA
DURA HEAT RIVER BIRCH	25'	491 S.F.	9 @ 50%	2,210 S.F.
BLUFF OAK	30'	707 S.F.	8 @ 50%, 1 @ 75%	3,093 S.F.
BOARDWALK LIVE OAK	45'	1,590 S.F.	8 @ 50%, 1 @ 75%	7,553 S.F.
WINGED ELM	40'	1,257 S.F.	9 @ 50%	5,657 S.F.

PAVED GROUND SURFACE AREA 36,312 S.F.
NEW CANOPY @ 20 YEARS..... 18,513 S.F.
PROJECTED CANOPY COVERAGE PERCENTAGE @ 20 YEARS..... 50%

SITE TREE CALCULATIONS (ULDC 406.12 (a) 3)

SYMBOL	QUANTITY	SCIENTIFIC NAME	COMMON NAME	SPR. @ 20 YRS.	CANOPY AREA	TOTAL AREA
BN	9	BETULA NIGRA 'DURA HEAT'	DURA HEAT RIVER BIRCH	25'	491 S.F.	4,419 S.F.
QA	9	QUERCUS AUSTRINA	BLUFF OAK	30'	707 S.F.	6,363 S.F.
QVB	9	QUERCUS VIRGINIANA 'BOARDWALK'	BOARDWALK LIVE OAK	45'	1,590 S.F.	14,310 S.F.
UA	9	ULMUS ALATA	WINGED ELM	40'	1,257 S.F.	11,313 S.F.

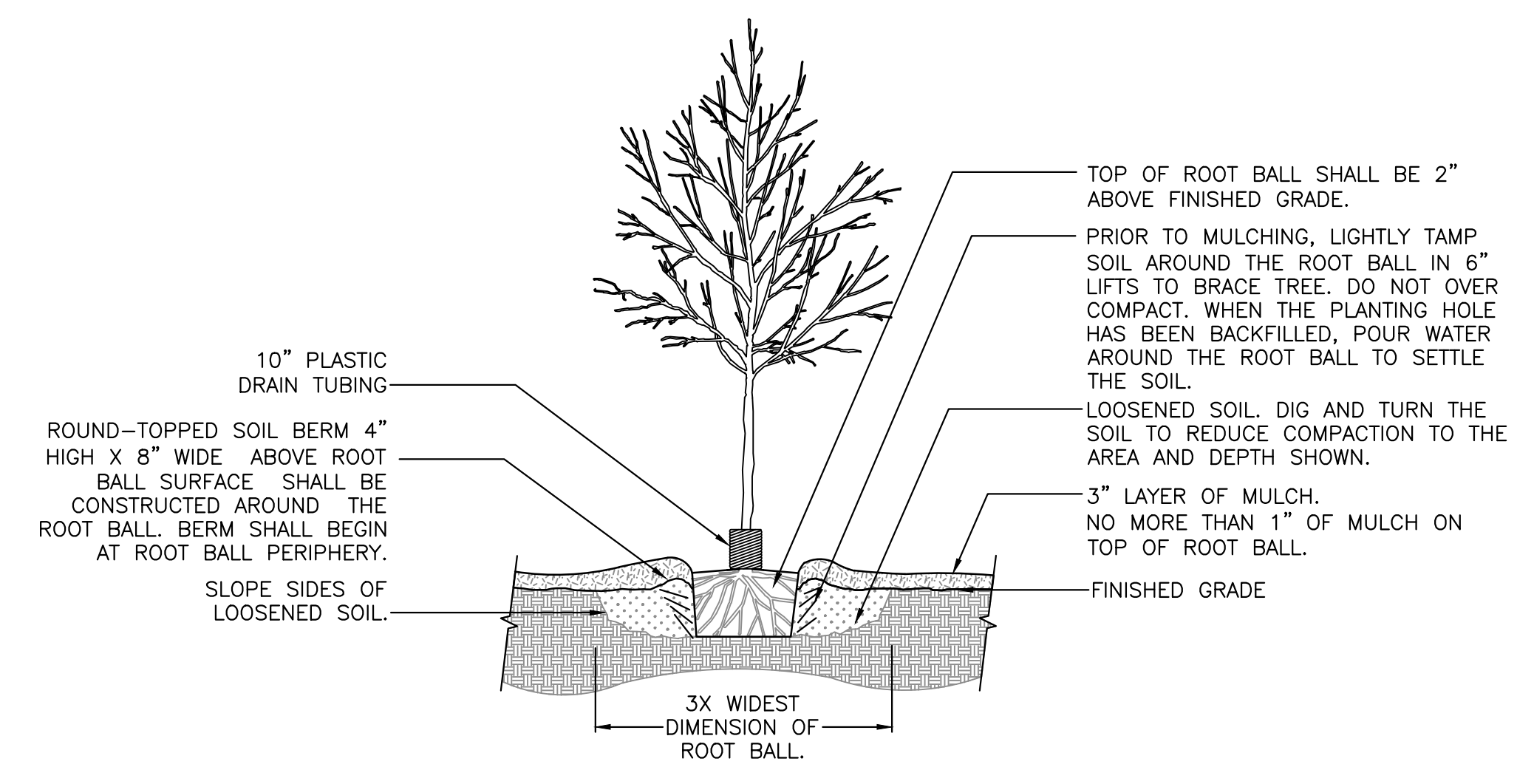
TOTAL SITE AREA..... 140,699 sq.ft.
NEW CANOPY @ 20 YEARS..... 36,405 sq.ft.
EXISTING CANOPY TO REMAIN..... 25,265 sq.ft.
TOTAL CANOPY @ 20 YEARS..... 61,670 sq.ft.
PERCENTAGE OF SITE CANOPY @ 20 YEARS
61,670 / 140,699 = 43.8%



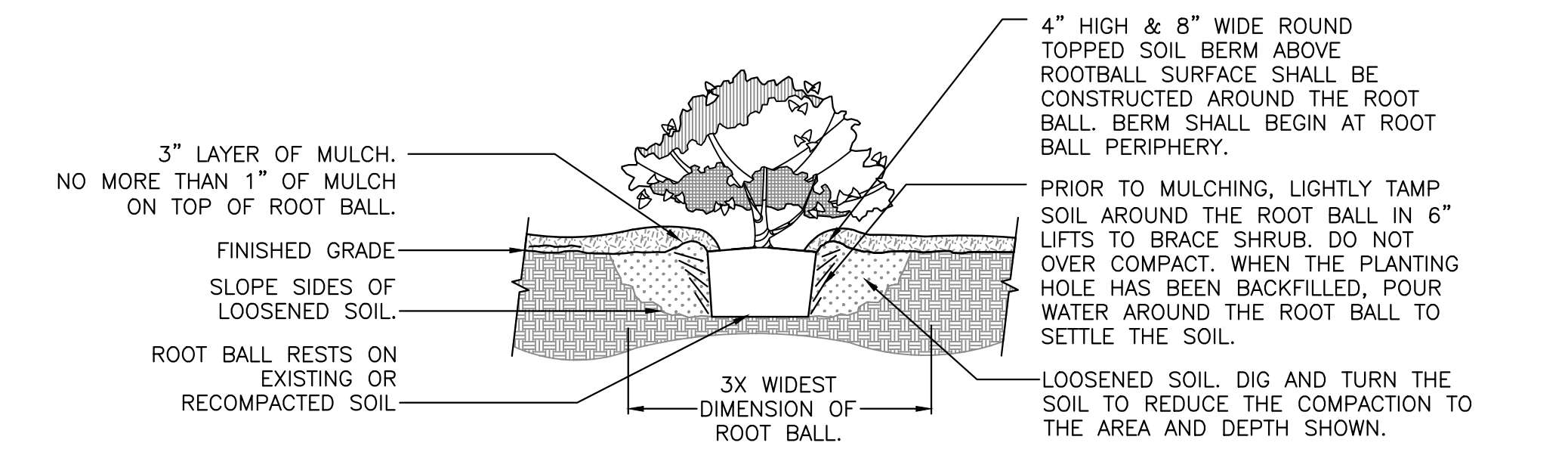
GENERAL NOTES
ALL ASPHALT, LIMESTONE, AND CONSTRUCTION DEBRIS SHALL BE REMOVED FROM PLANTING BEDS AND SOD AREAS PRIOR TO LANDSCAPE INSTALLATION. IF ENCOUNTERED DURING CONSTRUCTION OR INSTALLATION, THESE SHALL BE EXCAVATED AND REMOVED FROM THE SITE. PLANTING DEPTH OF SOIL IN SUCH AREAS SHOULD BE AT LEAST 3', IF FILL MUST BE ADDED, IT MUST BE FLORIDA CLEAN DEEP FILL (FREE OF WEED SEEDS) WITH PH 6.0 - 7.5.
ALL LANDSCAPED AREAS SHALL BE MULCHED WITH 3" THICKNESS OF MULCH. PINE BARK MULCH SHALL BE USED IN ALL AREAS.
NEW TREES OUTSIDE OF MULCHED LANDSCAPED BEDS WILL BE PROTECTED FROM MOWER AND STRING TRIMMER DAMAGE WITH 10" OF PLASTIC DRAIN TUBING.
LEADER SHOOTS AND MAIN STRUCTURAL LIMBS OF TREES SHALL NOT BE TOPPED OR PRUNED. TREES WILL BE STAKED AS NEEDED. GUYLINES WILL BE OF NON-SYNTHETIC BIODEGRADABLE MATERIAL.
AN INSPECTION OF TREES AND TREE BARRICADES IS REQUIRED BY ALACHUA COUNTY FORESTER/LANDSCAPING INSPECTOR PRIOR TO COMMENCEMENT OF CONSTRUCTION. CONTACT ARBORIST STAFF AT 352-374-5243 EXT. 3503. REFER TO CIVIL PLANS FOR TREE BARRICADE DETAILS AND INFORMATION.
NO CERTIFICATE OF OCCUPANCY WILL BE ISSUED UNTIL THE COUNTY HAS GRANTED FINAL APPROVAL AND ACCEPTANCE OF THE INSTALLED LANDSCAPING AS WELL AS THE PROTECTION OF EXISTING NATIVE VEGETATION SHOWN TO REMAIN ON THE DRC APPROVED PLAN. FINAL APPROVAL SHALL INCLUDE AN AS-BUILT LANDSCAPE PLAN CERTIFICATION FROM A REGISTERED LANDSCAPE ARCHITECT CERTIFYING THAT THE LANDSCAPE IS INSTALLED AND FUNCTIONING AS INTENDED AND THAT DISCOURAGED NON-NATIVE VEGETATION HAS BEEN REMOVED.

INVASIVE, EXOTIC PLANT MATERIAL
ALL INVASIVE PLANT SPECIES TO BE REMOVED FROM SITE PRIOR TO ISSUANCE OF THE CERTIFICATE OF OCCUPANCY.
PLANT MATERIAL
ALL PLANT MATERIAL TO BE FLORIDA NO.1 OR BETTER, GRADED IN ACCORDANCE WITH THE STATE OF FLORIDA DEPARTMENT OF AGRICULTURE, DIVISION OF PLANT INDUSTRY'S 'GRADES AND STANDARDS FOR NURSERY PLANTS', CURRENT EDITION AT THE TIME PLANS ARE ISSUED.
PLANT QUANTITIES SHOWN ARE FOR PERMITTING PURPOSES ONLY. IT IS THE RESPONSIBILITY OF THE CONTRACTOR TO CONFIRM ALL QUANTITIES SHOWN ON THE PLAN.
GRASSING
ALL DISTURBED AND UNPAVED AREAS, INCLUDING THE ADJACENT RIGHT OF WAY, TO BE GRASSED WITH SOD FREE OF NOXIOUS WEEDS AND TROPICAL SODA APPLE OR SEEDED AND MULCHED, UNLESS OTHERWISE NOTED. SEE CIVIL SITE PLANS FOR ADDITIONAL RELATED INFORMATION.

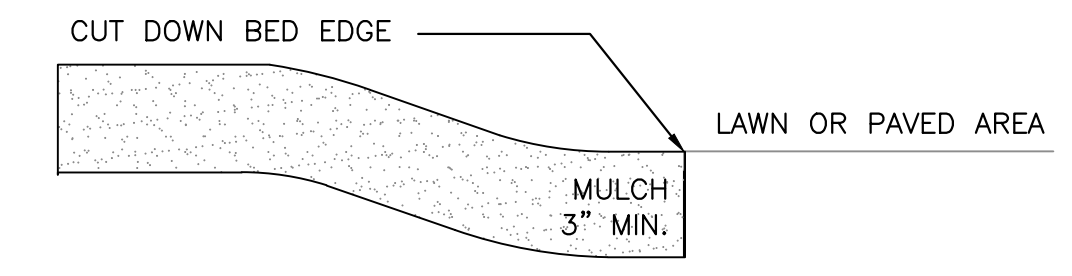
IRRIGATION NOTES
A TEMPORARY OR PERMANENT AUTOMATIC IRRIGATION SYSTEM IS REQUIRED FOR ALL NEW REQUIRED LANDSCAPING INSTALLED [407.46(A)]. TEMPORARY IRRIGATION SYSTEMS MUST BE REMOVED ONCE THE PLANTS ARE ESTABLISHED OR WITHIN ONE YEAR, WHICHEVER OCCURS FIRST. PRIOR TO THE INSTALLATION OF A NEW PERMANENT IRRIGATION SYSTEM OR ADDITION TO AN EXISTING SYSTEM, AN IRRIGATION PLAN MUST BE SUBMITTED TO AND APPROVED BY THE ALACHUA COUNTY ENVIRONMENTAL PROTECTION DEPARTMENT THROUGH CITIZENSERVE. THE IRRIGATION SYSTEM SHALL COMPLY WITH THE LANDSCAPE DESIGN AND MAINTENANCE STANDARDS FOUND IN ARTICLE VI OF PART II, TITLE 7, CHAPTER 77 OF THE ALACHUA COUNTY CODE, WHICH AMONG ADDITIONAL DESIGN STANDARDS, LIMIT IRRIGATION TO 50% OF THE PERMEABLE AREA. FOR MORE INFORMATION, VISIT THE IRRIGATION DESIGN STANDARDS WEBSITE OR CONTACT THE ALACHUA COUNTY ENVIRONMENTAL PROTECTION DEPARTMENT AT 352-264-6800.
ALL NEWLY PLANTED TREES SHALL HAVE INDIVIDUAL LOW FLOW OR MICRO-IRRIGATION SUPPLIES [407.46(A)3]. ALL IRRIGATION SYSTEMS ARE REQUIRED TO HAVE A MOISTURE SENSOR/AUTOMATIC RAINFALL SHUTOFF DEVICE [407.46(A)4].



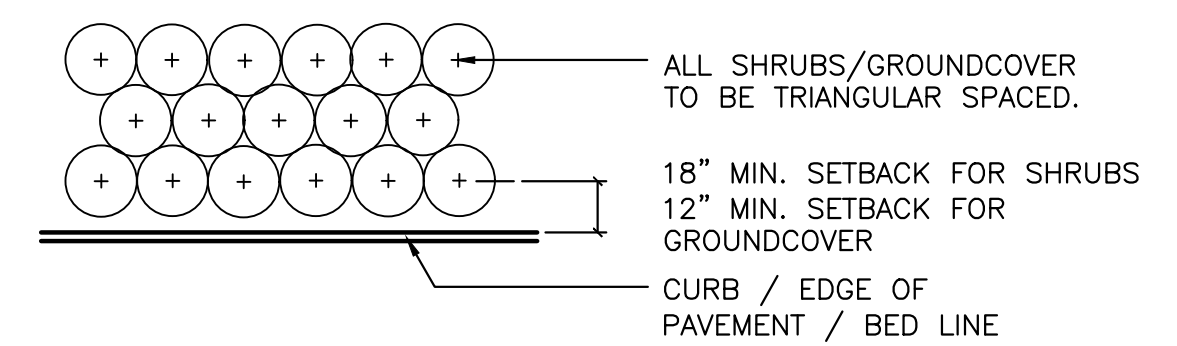
1 TREE PLANTING DETAIL
SCALE: N.T.S.



2 SHRUB PLANTING DETAIL
SCALE: N.T.S.



3 MULCH DETAIL
SCALE: N.T.S.



4 SHRUB PLANTING DETAIL
SCALE: N.T.S.

11801 Research Drive
Alachua, Florida 32615
(352) 351-1976
www.chw-inc.com
est. 1988 FLORIDA LA0001683

CHW
Professional Consultants

SCALE: N/A
DESIGN SCALE: AS SHOWN ON ORIGINAL DRAWING
0 1" = 1'-0" (AS SHOWN ON THIS SHEET, ADJUST SCALES ACCORDINGLY.)

CONSTRUCTION/REV. REVISIONS

DATE: 7/31/23
CLIENT: RELIANT REAL ESTATE MANAGEMENT, LLC
PROJECT: JONSEVILLE COMMERCIAL FDP
SHEET TITLE: LANDSCAPE NOTES AND DETAILS

DESIGNER: CAP
CHECKER: CAP
PROJECT NUMBER: 21-0565

REGISTERED LANDSCAPE ARCHITECT
LA 8667280
STATE OF FLORIDA

SHEET NO.: LS-1



TREE MITIGATION CALCULATIONS
SEE LS-2 FOR MITIGATION TABLE

TOTAL INCHES REQUIRED.....932"
 TOTAL INCHES PROPOSED.....72"
 TOTAL INCHES DEFICIT.....860"

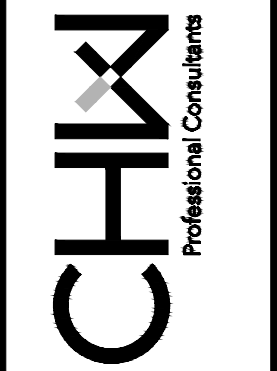
TOTAL MITIGATION PAYMENT:
 TOTAL PAYMENT REQUIRED
 (\$130/CALIPER INCH).....\$111,800

* NOTE: MITIGATION PAYMENT SHALL BE MADE PRIOR TO THE ISSUANCE OF THE SITE WORK PERMIT.

MITIGATION TABLE

Listed	Tag Number	Size	Common Name	Mitigation Required	Mitigation Inches
12"CHRYS"CED	7076.2	8	Cedar	1:1	2
8"CED	7084	8	Cedar	1:1	2
9"5"CHRY	7061	14	Cherry	1:1	2
12"CHRYS"CED	7076.1	12	Cherry	1:1	2
11"CHRY	7102	11	Cherry	1:1	2
14"CHRY	7104	14	Cherry	1:1	2
13"CHRY	7105	13	Cherry	1:1	2
11"9"CHRY	7128	20	Cherry	Inch for Inch	20
13"CHRY11"HACK	7209.1	13	Cherry	1:1	2
10"CHRY	7210	10	Cherry	1:1	2
17"14"10"8"CHRY	7218	49	Cherry	Inch for Inch	74
22"CHRY	7219	22	Cherry	Inch for Inch	22
16"CHRY	7591	16	Cherry	1:1	2
13"CHRY	7593	13	Cherry	1:1	2
16"CHRY	7596	16	Cherry	1:1	2
18"HACK	7086	18	Hackberry	1:1	2
25"HACK	7088	25	Hackberry	Inch for Inch	25
12"7"5"HACK	7089	24	Hackberry	Inch for Inch	24
13"CHRY11"HACK	7209.2	11	Hackberry	1:1	2
9"HACK	7220	9	Hackberry	1:1	2
12"LAO	7060	12	Laurel Oak	N/A	0
17"LAO	7062	17	Laurel Oak	N/A	0
13"LAO	7063	13	Laurel Oak	N/A	0
13"LAO	7064	13	Laurel Oak	N/A	0
18"LAO	7065	18	Laurel Oak	N/A	0
12"12"LAO	7066	24	Laurel Oak	N/A	0
19"14"LAO	7068	33	Laurel Oak	1:1	2
26"LAO	7069	26	Laurel Oak	N/A	0
14"LAO	7070	14	Laurel Oak	N/A	0
17"LAO	7072	17	Laurel Oak	N/A	0
11"LAO	7073	11	Laurel Oak	N/A	0
12"11"LAO	7074	23	Laurel Oak	N/A	0
13"LAO	7075	13	Laurel Oak	N/A	0
13"LAO	7077	13	Laurel Oak	N/A	0
13"LAO	7078	13	Laurel Oak	N/A	0
22"LAO	7080	22	Laurel Oak	N/A	0
13"LAO	7081	13	Laurel Oak	N/A	0
13"4"LAO	7082	17	Laurel Oak	N/A	0
9"LAO	7085	9	Laurel Oak	N/A	0
10"LAO	7097	10	Laurel Oak	N/A	0
27"LAO	7098	27	Laurel Oak	N/A	0
15"LAO	7099	15	Laurel Oak	N/A	0
10"LAO	7100	10	Laurel Oak	N/A	0
10"LAO	7103	10	Laurel Oak	N/A	0
9"LAO	7106	9	Laurel Oak	N/A	0
9"LAO	7107	9	Laurel Oak	N/A	0
14"LAO	7108	14	Laurel Oak	N/A	0
10"LAO	7109	10	Laurel Oak	N/A	0
16"LAO	7112	16	Laurel Oak	N/A	0
23"LAO	7113	23	Laurel Oak	N/A	0
9"9"5"LAO	7134	23	Laurel Oak	N/A	0
15"15"14"13"LAO	7588.2	27	Laurel Oak	N/A	0
28"LAO	7590	28	Laurel Oak	N/A	0
15"LAO	7592	15	Laurel Oak	N/A	0
17"LO	7096	17	Live Oak	1:1	2
28"LO	7135	28	Live Oak	Inch for Inch	28
44"LO	7137	44	Live Oak	Inch for Inch	59
48"LO	7138	48	Live Oak	Inch for Inch	71
47"LO	7139	47	Live Oak	Inch for Inch	68
20"LO	7140	20	Live Oak	Inch for Inch	20
23"LO	7141	23	Live Oak	Inch for Inch	23
37"LO	7143	37	Live Oak	Inch for Inch	41
31"LO	7144	31	Live Oak	Inch for Inch	32
33"LO	7145	33	Live Oak	Inch for Inch	35
34"LO	7146	34	Live Oak	Inch for Inch	36.5
29"LO	7147	31	Live Oak	Inch for Inch	32
32"LO	7148	32	Live Oak	Inch for Inch	33.5
23"LO	7149	23	Live Oak	Inch for Inch	23
38"LO	7150	38	Live Oak	Inch for Inch	42.5
34"LO	7152	34	Live Oak	Inch for Inch	36.5
28"LO	7153	28	Live Oak	Inch for Inch	28
35"LO	7585	35	Live Oak	Inch for Inch	38
24"LO	7587	24	Live Oak	Inch for Inch	24
12"LO	7600	12	Live Oak	1:1	2
25"LO	8096	25	Live Oak	Inch for Inch	25
23"LO	8097	23	Live Oak	Inch for Inch	23
8"MIM	7083	8	Mimosa	N/A	0
12"PINE	7067	12	Pine Spp.	N/A	0
11"PINE	7071	11	Pine Spp.	N/A	0
13"PINE	7111	13	Pine Spp.	N/A	0
14"PINE	7133	14	Pine Spp.	N/A	0
16"PINE	7136	16	Pine Spp.	N/A	0
19"PINE	7151	19	Pine Spp.	N/A	0
19"PINE	7581	19	Pine Spp.	N/A	0
15"15"14"13"LAO	7588.1	15	Pine Spp.	N/A	0
16"PALM	7079	16	Sabal Palm	1:1	2
12"PALM	7087	12	Sabal Palm	1:1	2
13"PALM	7142	13	Sabal Palm	1:1	2
16"PALM	7582	16	Sabal Palm	1:1	2
14"PALM	7583	14	Sabal Palm	1:1	2
18"PALM	7594	18	Sabal Palm	1:1	2

11801 Research Drive
 Alachua, Florida 32615
 (352) 331-1976
 www.chw-inc.com
 est. 1988 FLORIDA
 LA0001683



SCALE: N/A
 THESE SCALES ARE FOR THE ORIGINAL DRAWING ONLY. THEY MAY VARY FROM THIS SHEET. ADJUST SCALES ACCORDINGLY.

CONSTRUCTION/REV REVISIONS

DATE: 9/05/23 - ALACHUA COUNTY, GULF STREAM
 7/31/23 - ALACHUA COUNTY
 9/05/23 - ALACHUA COUNTY

CLIENT: RELIANT REAL ESTATE MANAGEMENT, LLC
 PROJECT: JONESTOWN COMMERCIAL FDP
 SHEET TITLE: MITIGATION TABLE

REVISION: CAP
 REVISION: CAP
 REVISION: CAP
 REVISION: CMT
 PROJECT NUMBER: 21-0565

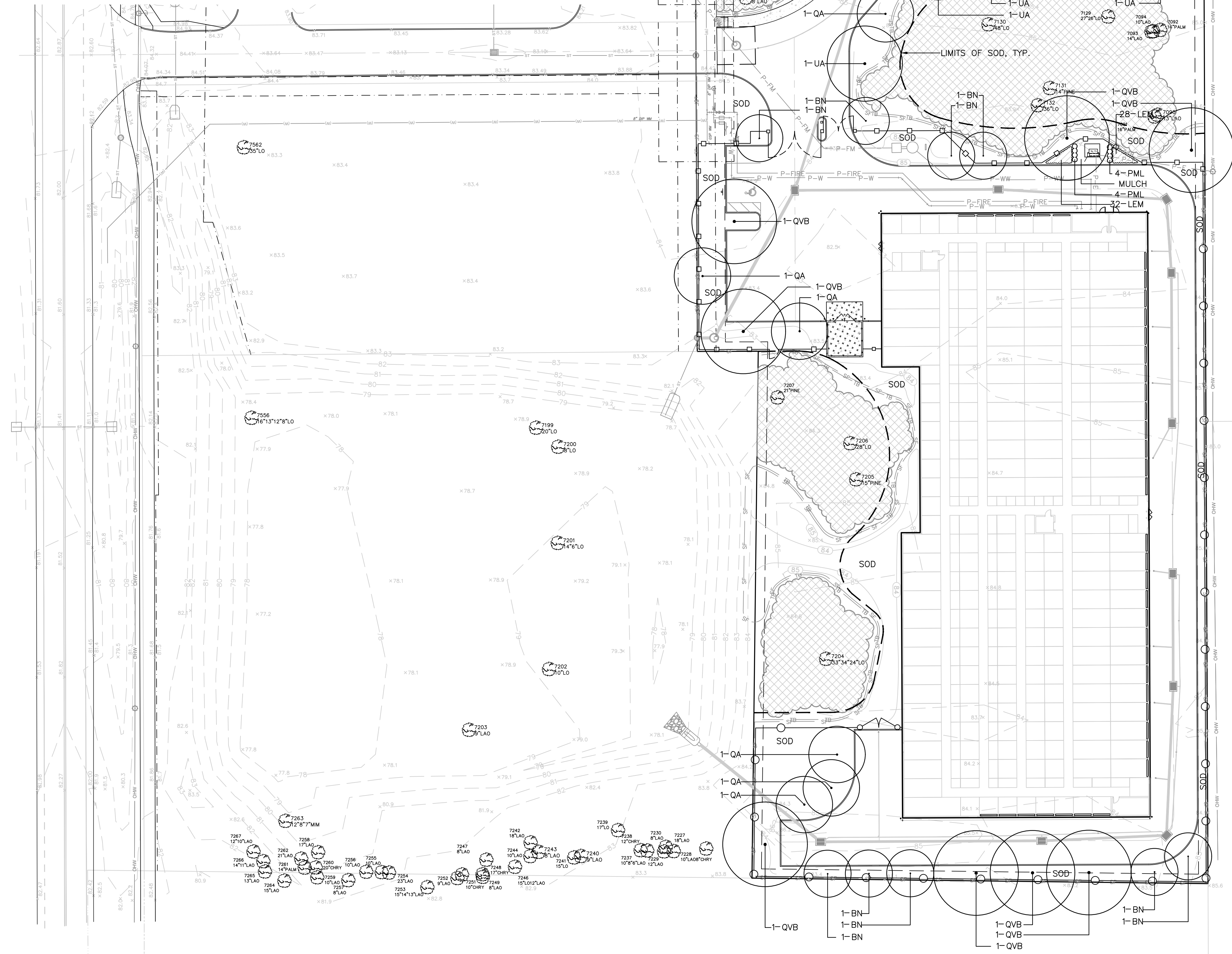


SHEET NO.: LS-2

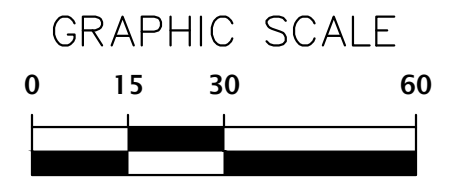
Text: outcrop Plot Date: Sep 05 2023 1:25pm Filename: N:\2021\21-0565\Upornm\A\03_Design\02_DWG\A\01_Permittin - FDP\A1-0565-Design-Book.dwg

PLANT SCHEDULE

TREES	QTY	BOTANICAL NAME	COMMON NAME	SIZE	
BN	9	BETULA NIGRA 'DURA HEAT'	DURA HEAT RIVER BIRCH	30 GAL, 12" HT, 42" SPR, 2" CAL	
QA	9	QUERCUS AUSTRINA	BLUFF OAK	30 GAL, 11" HT, 3" SPR, 2" CAL	
QVB	9	QUERCUS VIRGINIANA 'BOARDWALK'	BOARDWALK LIVE OAK	30 GAL, 12" HT, 54" SPR, 2" CAL	
UA	9	ULMUS ALATA	WINGED ELM	30 GAL, 10" HT, 4" SPR, 2" CAL	
SHRUBS	QTY	BOTANICAL NAME	COMMON NAME	SIZE	
PML	8	PODOCARPUS MACROPHYLLUS	PODOCARPUS	7 GAL, 36" HT, 18" SPR	
GROUND COVERS	QTY	BOTANICAL NAME	COMMON NAME	SIZE	SPACING
LEM	60	LIRIOPE MUSCARI 'EMERALD GODDESS'	EMERALD GODDESS LIRIOPE	1 GAL., FULL	18" o.c.
SOD/SEED	QTY	BOTANICAL NAME	COMMON NAME	SIZE	
SOD		PASPALUM NOTATUM 'ARGENTINE'	BAHIA GRASS	WEED FREE AND SAND GROWN SOD	



811 KNOW WHAT'S BELOW
 ALWAYS CALL 811 BEFORE YOU DIG
 It's fast, it's free, it's the law.
 Call 811 two business days before digging



11801 Research Drive
 Alachua, Florida 32615
 (352) 331-1976
 www.chw-inc.com
 est. 1988 FLORIDA LA0001683

CHW
 Professional Consultants

SCALE: 1" = 30'
 DIMENSIONS SHOWN ON ORIGINAL DRAWING
 0 INCHES SHOWN ON THIS SHEET, ADJUST SCALES ACCORDINGLY.

DATE: 05/23/23
 PROJECT: JONESTOWN COMMERCIAL FDP
 SHEET TITLE: LANDSCAPE PLAN

REVISION:
 CAP
 CAP
 CMIT
 PROJECT NUMBER: 21-0565

REGISTERED LANDSCAPE ARCHITECT
 LA 8667280
 STATE OF FLORIDA

SHEET NO.: LS-3

1
2
3
4
A
B
C
D

File Name: N:\2021\21-0565\Unperm\m\03_Design\02_LAND\01_Perm\11-0565-Design-Book.dwg
 Text: outcrop Plot Date: Sat 05/20/23 1:43pm