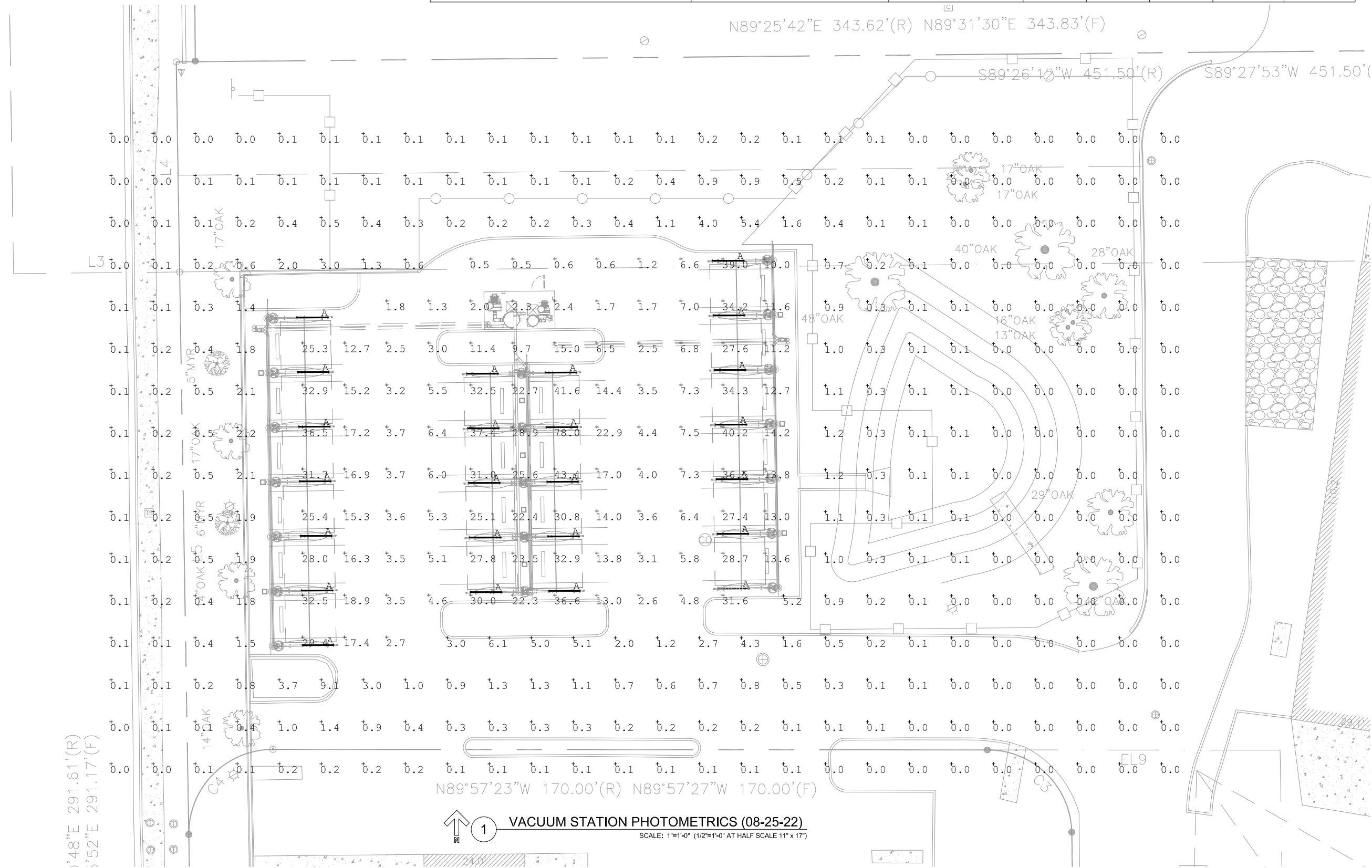


COUNTY ROAD NO. S.W. 29
N.W. 75th STREET
(RIGHT-OF-WAY VARIES)

N48°E 291.61'(R)
S52°E 291.17'(F)



Luminaire Schedule		Label	Arrangement	Description	Tag	LLF	Luminaire Lumens	Luminaire Watts
Symbol	Qty							
	24	A	Single	G&G LED LINEAR VACUME LIGHT# GPX8-HO MOUNTED AT 8.5'		0.950	8000	62

Calculation Summary								
Label	CalcType	Units	Avg	Max	Min	Avg/Min	Max/Min	
SPILL LIGHT	Illuminance	Fc	0.46	9.1	0.0	N.A.	N.A.	
VACUME PRKING	Illuminance	Fc	16.00	78.0	0.5	32.00	156.00	

N89°25'42"E 343.62'(R) N89°31'30"E 343.83'(F)

S89°26'10"W 451.50'(R) S89°27'53"W 451.50'(F)

N89°57'23"W 170.00'(R) N89°57'27"W 170.00'(F)

VACUUM STATION PHOTOMETRICS (08-25-22)
SCALE: 1"=1'-0" (1/2"=1'-0" AT HALF SCALE 11" x 17")

IF PLOTTED AT 11" x 17", SCALE IS ONE HALF AS NOTED.
NOT VALID WITHOUT EMBOSSED SEAL AND SIGNATURE OF THE ARCHITECT.

ARCHITECTURE
ENGINEERING
PLANNING

SARASOTA, FLORIDA
941.366.2477 FAX 941.365.5446
Brent A. Parker, AIA, LEED AP, FASIA, FAS
Tom Thompson, P.E., LEED AP, FASIA, FAS
Thomas R. Walker, LEED AP, FASIA, FAS
www.pwp.net

Parker Water GROUP INC.

PARK PLACE
CAR WASH

7404 NW 4TH BOULEVARD
GAINESVILLE, FLORIDA 32607

Revisions

SITE PHOTOMETRICS PLAN

Scale: -

Plot Date	Aug 25, 2022
Project Revision Date	-
Project No.	21031
Drawn By	-

SP-4.0
of sheets

Seal	
Date of Issue	