



# Hurricane Season Preparedness

## Alachua County

## Emergency Management

Jen Grice, MPH, FPEM  
Director of Emergency Management

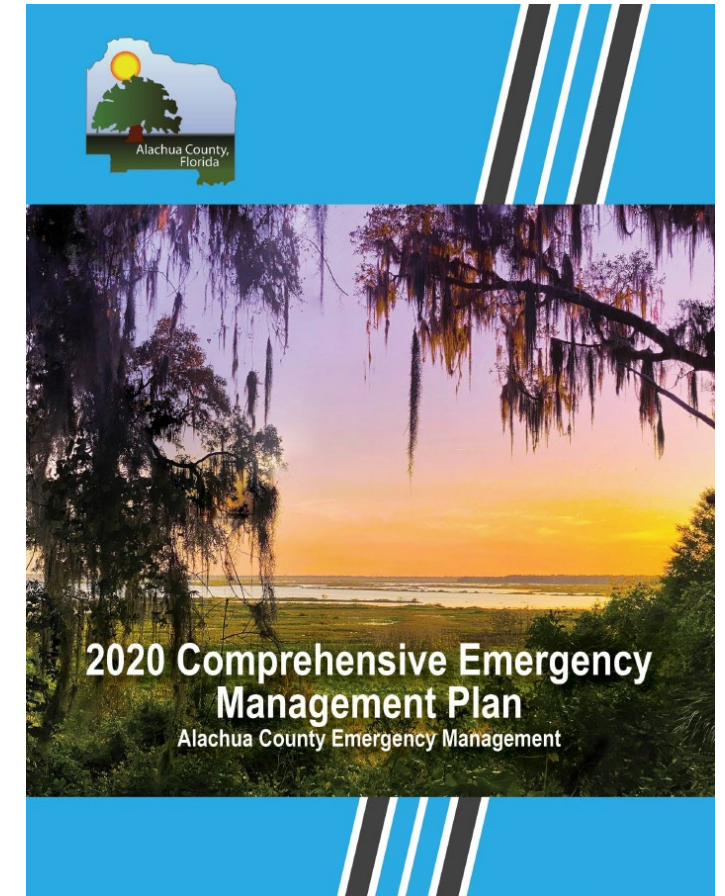
# Agenda

- Government Preparedness
- Personal Preparedness



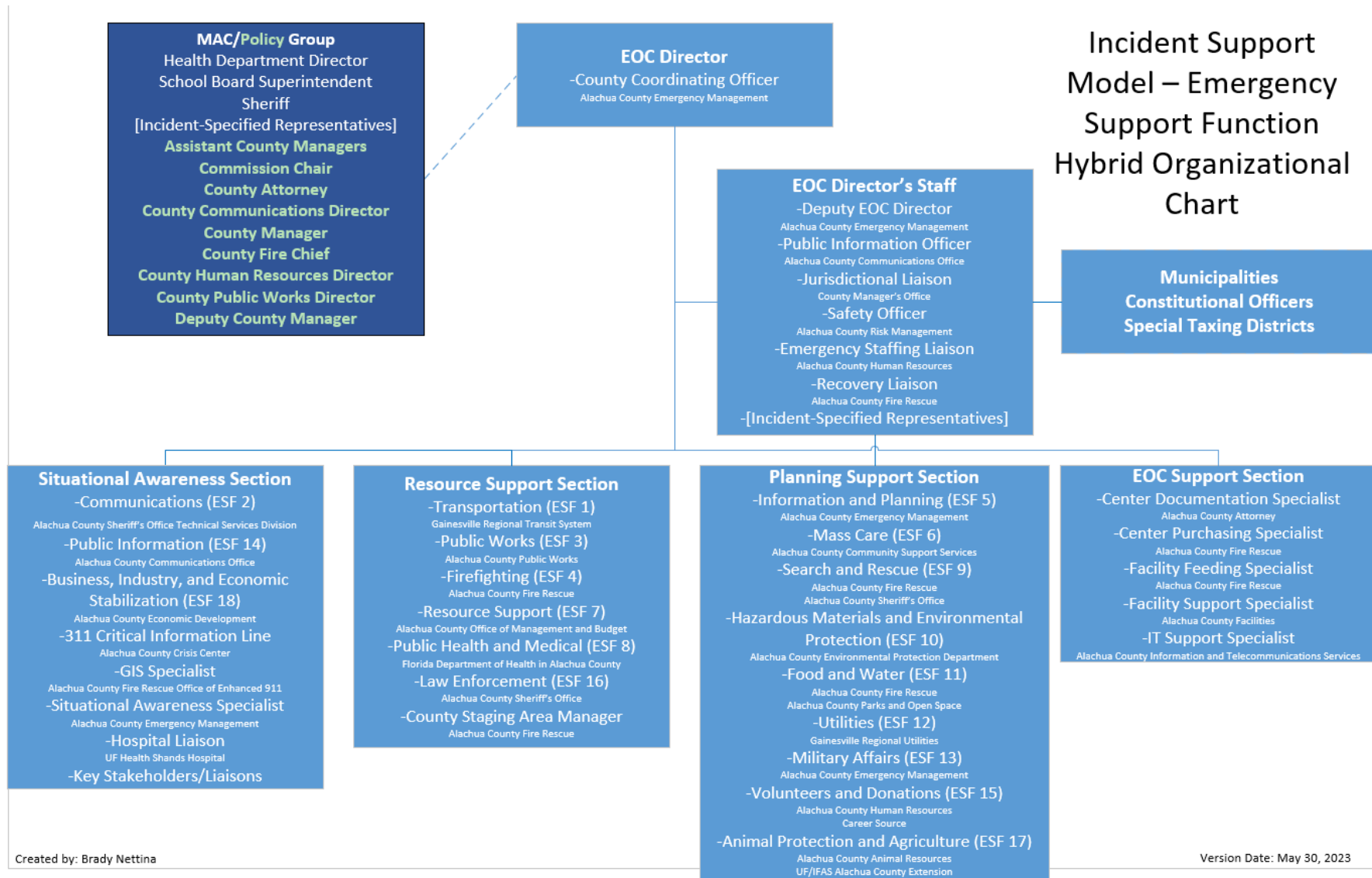
# Government Preparedness

- All-hazards planning, training, exercises
- Hazards:
  - Flooding
  - Active assailant/Mass casualty
  - Pandemic
  - Tornadoes
  - Wildfires
- Top Hazard:
  - Hurricanes/Tropical cyclones
- EOC Readiness:
  - Testing facility equipment: technology, redundant communications
  - Must be able to activate the EOC within 1 hour of notification of an incident



# Government Preparedness

- Some of the agencies we work with year-round
  - County Manager's Office
  - County Communications Office
  - Fire Rescue
  - Sheriff's Office Combined Communications Center
  - Visitors and Convention Bureau
  - Crisis Center
  - RTS
  - Public Works
  - Purchasing Division
  - Florida Department of Health in Alachua County
  - Sheriff's Office
  - Growth Management
  - Community Support Services
  - Environmental Protection
  - Gainesville Regional Utilities
  - Human Resources
  - Animal Resources and Care
  - IFAS Extension Office
  - County Attorney
  - Critical Facilities
  - ITS
  - Office of Management and Budget
  - Municipalities
  - Constitutional Officers
  - Special Taxing Districts
  - Non-profit organizations
  - 8 utility companies
  - School Board
  - University of Florida
  - Santa Fe College



# Government Preparedness

- Alert and Notification
  - AlertAlachua.com
  - Wireless Emergency Alerts
  - Text ALACHUA to 888-777
- Special Needs Registry
- Healthcare Facility Plan Reviews
  - More than 85 facilities
  - Emergency power plans





# Government Preparedness

- Shelters
  - Yearly walk-throughs
  - Mandatory shelter training for all County employees
  - In-person hands-on shelter manager training
  - Meetings and training with shelter partner agencies:
    - Health Department (Special Needs Shelter lead agency)
    - Law enforcement
    - School board feeding personnel
    - EMS
    - HAM Radio Operators
    - Facility representative (school board or municipality)
    - IT support
    - MV Transportation
    - Shelter Runners
  - Retrofit projects:
    - Completed: MLK Center, Sidney Lanier, Alachua County Freedom Center
    - Current Projects: Grace Marketplace



# Personal Preparedness

- Know your zone, know your home
  - No evacuation zones in Alachua County
  - Find out if you live in a flood zone
  - Building codes, known vulnerabilities in your home
  - If you feel unsafe in your home, you should evacuate
- Make a plan
  - FLGetAPlan.com: Family, Business, Special Needs
  - Include your family and pet(s) in the plan, let people close to you know what the plan is





# Personal Preparedness

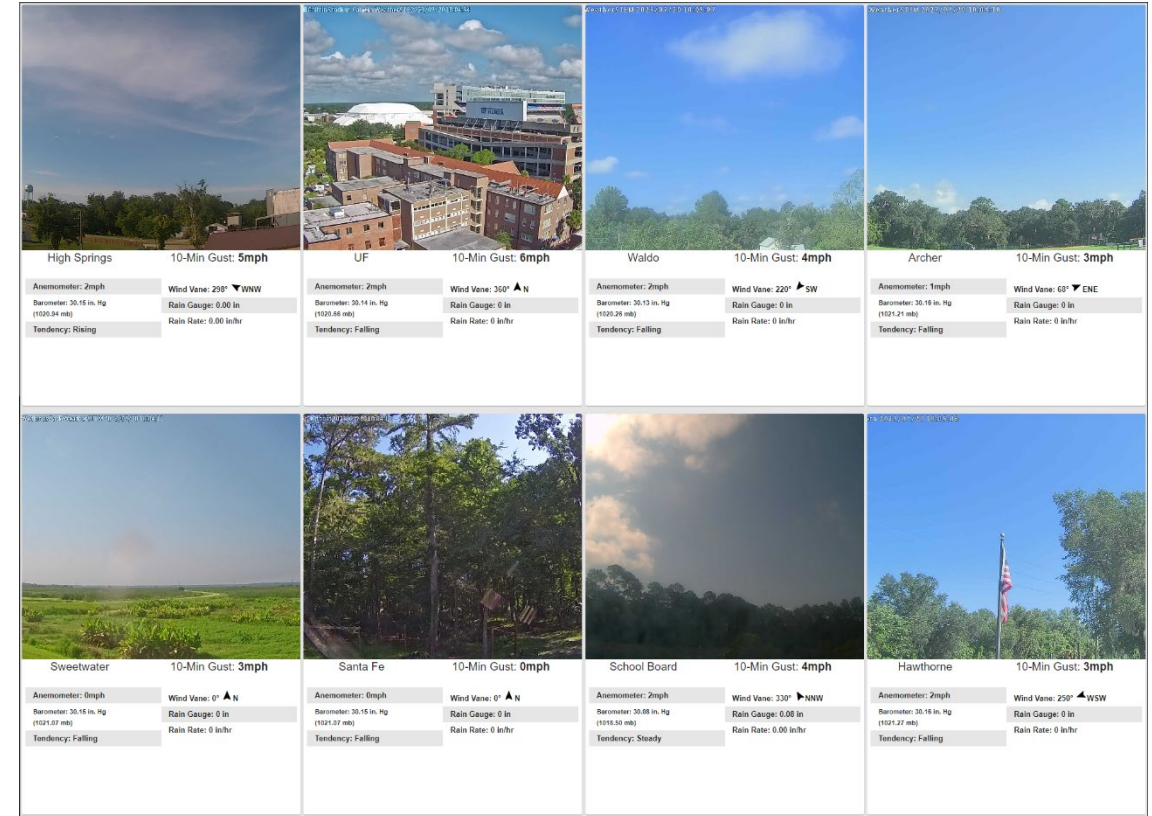
- Flood insurance: 1 month grace period
- Trim/cut down problem trees (must determine if permits are needed before cutting)
- Prepare for prolonged power outages
- Secure important documents in waterproof/fireproof container (make copies for your emergency kit); scan documents and store in the cloud

# Personal Preparedness

- Make a Kit
  - Important documents
  - Shelf stable food
  - Hygiene items
  - Water
    - At least 1 gal/person/day
    - Factor in cooking, cleaning, pet water into calculations
    - Hold onto gallon jugs or other containers you may have and fill those with tap water before the storm
    - Keep bleach on hand for purification: 6-8 drops of bleach/gallon
  - Sleeping supplies
  - Extra clothing
  - At least 14 days' worth of medications
  - Cash
  - NOAA Weather Radio
  - Batteries
  - Chargers for electronics
  - Specific items for babies, children, elderly
  - Pet food, medications, crate, other pet supplies
  - Additional resources:  
<https://www.ready.gov/kit>

# Personal Preparedness

- Stay Informed
  - Text ALACHUA to 888-777
  - AlachuaCountyReady.com
  - WeatherSTEM
- Stay Ahead
  - Smart 911



# Questions?

